

SUMMARY 21 September 2023

Counter	News	Trend	Support	Resistance
<u>DJIA Futures</u>	Bursa saham AS ditutup melemah pada hari Rabu setelah Federal Reserve AS mempertahankan suku bunga utama tidak berubah seperti yang diperkirakan secara luas, dan merevisi proyeksi ekonomi lebih tinggi dengan peringatan bahwa perjuangan melawan inflasi masih jauh dari selesai. Resistance utama 34958, support 34598	↓	34598	34958
<u>S&P 500</u>	Bursa saham AS ditutup melemah pada hari Rabu setelah Federal Reserve AS mempertahankan suku bunga utama tidak berubah seperti yang diperkirakan secara luas, dan merevisi proyeksi ekonomi lebih tinggi dengan peringatan bahwa perjuangan melawan inflasi masih jauh dari selesai. Resistance utama 4486.00, support 4421.75	↓	4421.75	4486.00
<u>Nasdaq</u>	Bursa saham AS ditutup melemah pada hari Rabu setelah Federal Reserve AS mempertahankan suku bunga utama tidak berubah seperti yang diperkirakan secara luas, dan merevisi proyeksi ekonomi lebih tinggi dengan peringatan bahwa perjuangan melawan inflasi masih jauh dari selesai. Resistance utama 15335.00, support 15027.25	↓	15027.25	15335.00
<u>Nikkei Futures</u>	Indeks Nikkei 225 melemah 0,66% ditutup pada 33.024 sementara Indeks Topix turun 1% menjadi 2.406 pada hari Rabu, memperpanjang pelemahan dari sesi sebelumnya dan mengikuti penurunan Wall Street karena investor bersiap untuk keputusan suku bunga Federal Reserve AS. Bank of Japan juga akan mengumumkan keputusan kebijakan moneter pada hari Jumat, di mana investor akan fokus pada petunjuk tentang kemungkinan diakhirinya pengaturan moneter yang sangat longgar. Sementara itu, data menunjukkan bahwa defisit perdagangan Jepang menyempit tajam pada bulan Agustus, sementara impor dan ekspor mencatat penurunan yang lebih kecil dari perkiraan. Resistance utama 32985, support 32655	↓	32655	32985
<u>Hang Seng Futures</u>	Hang Seng melemah 111,57 poin atau 0,62% ditutup pada angka 17,885.60 pada hari Rabu, bergeser dari kenaikan yang tercatat di sesi sebelumnya dan mendekati level terendah dalam sebulan, terseret oleh laporan bahwa saham-saham Tiongkok yang terdaftar di AS mengalami penurunan terbesar dalam hampir dua tahun terakhir. Sementara itu, The Fed AS akan memberikan kebijakan hawkish pada hari ini, sementara investor juga akan memantau dengan cermat proyeksi ekonomi baru, terutama karena kenaikan harga minyak dapat menyebabkan tekanan harga baru. Resistance utama 18188, support 17850	↓	17850	18188

Closing Prices – 20 September 2023

	CLOSE	CHANGE		CLOSE	CHANGE
.DJI	34440.88	↓ 76.85 / 0.22%	.N225	33022.00	↓ 242.00 / 0.73%
/.SPX	4402.20	↓ 41.75 / 0.94%	.KS200	2559.74	↑ 0.53 / 0.02%
/.IXIC	13469.13	↓ 209.06 / 1.53%	.HSI	17887.00	↓ 88.00 / 0.49%
JPY=	148.34	↑ 0.49 / 0.33%	/.SSEC	3108.57	↓ 16.39 / 0.52%
KRW=	1330.13	↑ 1.69 / 0.13%	/CLc1 (Oil)	89.24	↓ 1.46 / 1.61%

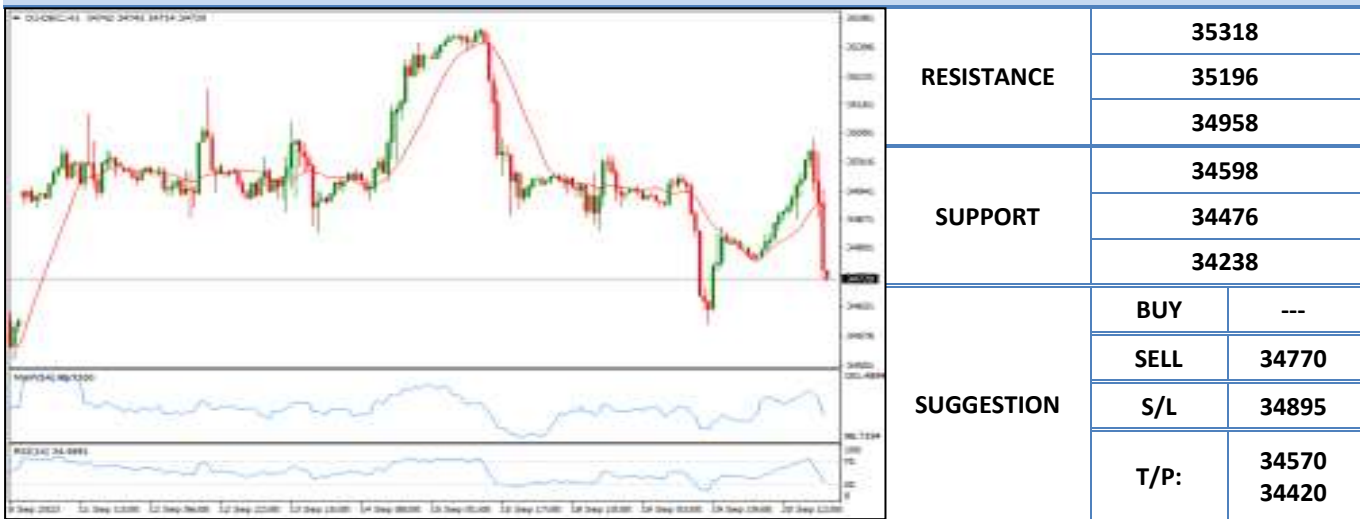
ECONOMIC INDICATOR

DATE	WIB	CTY	INDICATORS	PER	ACTUAL	FORECAST	PREV.	REV.
Mon/18-Sep-23	05:30	NZ	Performance Services Index	Aug	47.1	--	47.8	--
		All	JP Bank Holiday (Respect for the Aged Day)					
	19:15	CA	Housing Starts	Aug	253k	247.1k	255k	--
	19:30	CA	Industrial Product Price MoM	Aug	1.3%	0.5%	0.4%	-0.1%
Tue/19-Sep-23	N/A	EZ	OECD Publishes Economic Outlook					
	08:30	AU	RBA Minutes of Sept. Policy Meeting					
	13:00	CH	Exports Real MoM	Aug		--	-4%	--
	13:00	CH	Imports Real MoM	Aug		--	-1.8%	--
	15:00	EZ	ECB Current Account SA	Jul	€26.85b	--	€36.77b	--
	15:30	HK	Unemployment Rate SA	Aug	2.8%	--	2.8%	--
	16:00	EZ	CPI YoY	Aug F	5.2%	5.3%	5.3%	5.30%
	16:00	EZ	CPI MoM	Aug F	0.5%	0.6%	-0.1%	--
	16:00	EZ	CPI Core YoY	Aug F	5.3%	5.3%	5.5%	--
	19:30	CA	CPI Core- Trim YoY%	Aug	3.9%	3.5%	3.6%	--
	19:30	CA	CPI NSA MoM	Aug	0.4%	0.3%	0.6%	--
	19:30	CA	CPI YoY	Aug	4%	3.8%	3.3%	--
	19:30	CA	Consumer Price Index	Aug		--	158.1	--
	19:30	CA	CPI Core- Median YoY%	Aug	4.1%	--	3.9%	--
	19:30	EZ	ECB's Elderson Speaks					
	19:30	US	Building Permits	Aug	1543k	1443k	1442k	1443k
	19:30	US	Housing Starts	Aug	1283k	1440k	1452k	1447k
	19:30	US	Housing Starts MoM	Aug	-11.3%	-0.8%	3.9%	2%
	19:30	US	Building Permits MoM	Aug	6.9%	0.3%	0.1%	--
Wed/20-Sep-23	00:45	CA	Bank of Canada Speech: Kozicki in Regina					
	05:45	NZ	BoP Current Account Balance NZD	2Q	NZ\$-4.208b	NZ\$-4.800b	NZ\$-5.215b	NZ\$-4.662b
	05:45	NZ	Current Account GDP Ratio YTD	2Q	-7.5%	-8%	-8.5%	--
	06:50	JP	Trade Balance	Aug	¥-930.5b	¥-659.1b	¥-78.7b	¥-66.3b
	06:50	JP	Trade Balance Adjusted	Aug	¥-560b	¥-560b	¥-557.2b	¥-600b
	06:50	JP	Exports YoY	Aug	-0.8%	-1.7%	-0.3%	--
	06:50	JP	Imports YoY	Aug	-17.8%	-19.4%	-13.5%	-13.6%
	07:30	AU	Westpac Leading Index MoM	Aug	-0.04%	--	0.01%	--
	13:00	DE	PPI MoM	Aug	0.3%	0.2%	-1.1%	--
	13:00	DE	PPI YoY	Aug	-12.6%	-12.6%	-6%	--
	13:00	GB	CPI MoM	Aug	0.3%	0.7%	-0.4%	--
	13:00	GB	CPI YoY	Aug	6.7%	7%	6.8%	--
	13:00	GB	CPI Core YoY	Aug	6.2%	6.8%	6.9%	--
	13:00	GB	CPIH YoY	Aug	--	--	6.4%	--
	13:00	GB	Retail Price Index	Aug		--	374.2	--
	13:00	GB	RPI MoM	Aug	0.6%	0.8%	-0.6%	--
	13:00	GB	RPI YoY	Aug	9.1%	9.3%	9%	--
	13:00	GB	RPI Ex Mort Int.Payments (YoY)	Aug		--	7.9%	--
	13:00	GB	PPI Output NSA MoM	Aug	0.2%	0.1%	0.1%	0.2%
	13:00	GB	PPI Output NSA YoY	Aug	-0.4%	-0.6%	-0.8%	-0.7%
	13:00	GB	PPI Input NSA MoM	Aug	0.4%	0.2%	-0.4%	--
	13:00	GB	PPI Input NSA YoY	Aug	-2.3%	-2.7%	-3.3%	-3.2%
	14:00	CH	SECO September Economic Forecasts					
	15:30	GB	House Price Index YoY	Jul	0.6%	0.0%	1.7%	1.9%
	16:00	EZ	Construction Output MoM	Jul	0.8%	--	-1%	-1.23%
	16:00	EZ	Construction Output YoY	Jul	1.0%	--	-0.3%	-0.8%
	19:30	EZ	ECB's Elderson Speaks					
21:30	US	DOE U.S. Crude Oil Inventories	15-Sep	-2135k	-2200k	3954k	--	
21:30	US	DOE Cushing OK Crude Inventory	15-Sep	-2064k	--	-2450k	--	
21:30	US	DOE U.S. Gasoline Inventories	15-Sep	-831k	317k	5560k	--	
21:30	US	DOE U.S. Distillate Inventory	15-Sep	-2867k	217k	3931k	--	
21:30	US	DOE U.S. Refinery Utilization	15-Sep	-1.8%	--	0.6%	--	
Thu/21-Sep-23	00:30	CA	Bank of Canada Releases Summary of Deliberations					
	01:00	US	FOMC Rate Decision (Upper Bound)	20-Sep	5.50%	5.50%	5.50%	--
	01:00	US	FOMC Rate Decision (Lower Bound)	20-Sep	5.25%	5.25%	5.25%	--
	01:00	US	Interest on Reserve Balances Rate	21-Sep		--	5.40%	--
	01:30	US	Fed Chair Holds Press Conference Following FOMC Meeting					
	05:45	NZ	GDP SA QoQ	2Q		0.4%	-0.1%	--
	05:45	NZ	GDP YoY	2Q		1.2%	2.2%	--
	14:30	CH	SNB Policy Rate	21-Sep		2%	1.75%	--
	15:30	HK	BoP Overall	2Q		--	\$3.64b	--
	15:30	HK	CPI Composite YoY	Aug		--	1.8%	--
	15:30	HK	BoP Current Account Balance	2Q		--	\$41.26b	\$42.62b
	18:00	GB	Bank of England Bank Rate	21-Sep		5.50%	5.25%	--

	19:30	US	Current Account Balance	2Q		-\$219.8b	-\$219.3b	--
	19:30	US	Initial Jobless Claims	16-Sep		--	220k	--
	19:30	US	Continuing Claims	9-Sep		--	1688k	--
	19:30	US	Philadelphia Fed Business Outlook	Sep		-0.4	12	--
	21:00	EZ	Consumer Confidence	Sep P		-15	-16	--
	21:00	US	Existing Home Sales	Aug		4.1m	4.07m	--
	21:00	US	Existing Home Sales MoM	Aug		0.7%	-2.2%	--
	21:00	US	Leading Index	Aug		-0.4%	-0.4%	--
	21:40	EZ	ECB's Schnabel Speaks					
Fri/22-Sep-23	N/A	DE	Germany Sovereign Rating to be reviewed by S&P					
	N/A	JP	BOJ Policy Balance Rate	22-Sep		--	-0.10%	--
	N/A	JP	BOJ 10-Yr Yield Target	22-Sep		--	0.00%	--
	04:00	NZ	Westpac Consumer Confidence	3Q		--	83.1	--
	05:45	EZ	ECB's Lane Speaks					
	05:45	NZ	Imports NZD	Aug		--	6.56b	--
	05:45	NZ	Exports NZD	Aug		--	5.45b	--
	05:45	NZ	Trade Balance NZD	Aug		--	-1107m	--
	05:45	NZ	Trade Balance 12 Mth YTD NZD	Aug		--	-15806m	--
	06:00	AU	Judo Bank Australia PMI Composite	Sep P		--	48	--
	06:00	AU	Judo Bank Australia PMI Mfg	Sep P		--	49.6	--
	06:00	AU	Judo Bank Australia PMI Services	Sep P		--	47.8	--
	06:01	GB	GfK Consumer Confidence	Sep		--	-25	--
	06:30	JP	Natl CPI YoY	Aug		3%	3.3%	--
	06:30	JP	Natl CPI Ex Fresh Food YoY	Aug		3%	3.1%	--
	06:30	JP	Natl CPI Ex Fresh Food, Energy YoY	Aug		4.3%	4.3%	--
	07:30	JP	Jibun Bank Japan PMI Composite	Sep P		--	52.6	--
	07:30	JP	Jibun Bank Japan PMI Mfg	Sep P		--	49.6	--
	07:30	JP	Jibun Bank Japan PMI Services	Sep P		--	54.3	--
	13:00	GB	Retail Sales Inc Auto Fuel MoM	Aug		--	-1.2%	--
	13:00	GB	Retail Sales Inc Auto Fuel YoY	Aug		--	-3.2%	--
	13:00	GB	Retail Sales Ex Auto Fuel MoM	Aug		--	-1.4%	--
	13:00	GB	Retail Sales Ex Auto Fuel YoY	Aug		--	-3.4%	--
	14:30	DE	HCOB Germany Manufacturing PMI	Sep P		39	39.1	--
	14:30	DE	HCOB Germany Services PMI	Sep P		47.5	47.3	--
	14:30	DE	HCOB Germany Composite PMI	Sep P		44.9	44.6	--
	15:00	EZ	HCOB Eurozone Manufacturing PMI	Sep P		43.6	43.5	--
	15:00	EZ	HCOB Eurozone Services PMI	Sep P		47.8	47.9	--
	15:00	EZ	HCOB Eurozone Composite PMI	Sep P		46	46.7	--
	15:30	GB	S&P Global/CIPS UK Manufacturing PMI	Sep P		--	43	--
	15:30	GB	S&P Global/CIPS UK Services PMI	Sep P		--	49.5	--
	15:30	GB	S&P Global/CIPS UK Composite PMI	Sep P		--	48.6	--
	18:00	EZ	ECB's Guindos Speaks					
	19:30	CA	Retail Sales MoM	Jul		--	0.1%	--
	19:30	CA	Retail Sales Ex Auto MoM	Jul		--	-0.8%	--
	19:50	US	Fed's Cook Speaks at NBER AI Conference					
	20:45	US	S&P Global US Manufacturing PMI	Sep P		47.9	47.9	--
	20:45	US	S&P Global US Services PMI	Sep P		--	50.5	--
	20:45	US	S&P Global US Composite PMI	Sep P		--	50.2	--
Sat/23-Sep-23	00:00	US	Baker Hughes U.S. Rig Count	22-Sep		--	--	--
	00:00	US	Fed's Daly to Discuss Monetary Policy, Economy					

Dow Jones (DJ – DEC)

Exp. Date: 14 December 2023



DATE	OPEN	HIGH	LOW	RANGE	CLOSE	SETTLE	CHANGE	CHANGE %	VOLUME
20 Sep	34808	35074	34714	360	34720	34720	↓ 94	0.27	--

WEEKLY		SEPTEMBER		2023	
HIGH	LOW	HIGH	LOW	HIGH	LOW
35074 (20/Sep)	34605 (19/Sep)	35352 (15/Sep)	34316 (06/Sep)	35837 (27/Jul)	31422 (15/Mar)

S&P 500 (SP – DEC)

Exp. Date: 14 December 2023



DATE	OPEN	HIGH	LOW	RANGE	CLOSE	SETTLE	CHANGE	CHANGE %	VOLUME
20 Sep	4490.00	4507.25	4443.00	64.25	4443.25	4443.25	↓ 48.25	1.07	--

WEEKLY		SEPTEMBER		2023	
HIGH	LOW	HIGH	LOW	HIGH	LOW
4513.75 (18/Sep)	4443.00 (20/Sep)	4565.50 (15/Sep)	4433.75 (07/Sep)	4633.75 (27/Jul)	3808.50 (13/Mar)

Nasdaq (NQ – DEC)

Exp. Date: 14 December 2023



RESISTANCE	15642.75	
	15538.75	
	15335.00	
SUPPORT	15027.25	
	14923.25	
	14719.50	
SUGGESTION	BUY	---
	SELL	15180.00
	S/L	15280.00
	T/P:	14980.00 14830.00

DATE	OPEN	HIGH	LOW	RANGE	CLOSE	SETTLE	CHANGE	CHANGE %	VOLUME
20 Sep	15377.00	15434.75	15127.00	307.75	15131.25	15131.25	↓ 252.00	1.64	--

WEEKLY		SEPTEMBER		2023	
HIGH	LOW	HIGH	LOW	HIGH	LOW
15458.50 (18/Sep)	15127.00 (20/Sep)	15718.00 (15/Sep)	15127.00 (20/Sep)	16059.75 (19/Jul)	10750.00 (06/Jan)

Nikkei (NIK– DEC)

Exp. Date: 07 December 2023



RESISTANCE	33315	
	33200	
	32985	
SUPPORT	32655	
	32540	
	32325	
SUGGESTION	BUY	---
	SELL	32820
	S/L	32945
	T/P:	32570 32420

DATE	OPEN	HIGH	LOW	RANGE	CLOSE	SETTLE	CHANGE	CHANGE%	VOLUME
20 Sep	33070	33085	32755	330	32770	32770	↓ 285	0.86	--

WEEKLY		SEPTEMBER		2023	
HIGH	LOW	HIGH	LOW	HIGH	LOW
33175 (19/Sep)	32755 (20/Sep)	33435 (15/Sep)	32165 (11/Sep)	33955 (16/Jun)	25565 (03/Jan)

Hang Seng (HAS – SEP)

Exp. Date: 28 September 2023



DATE	OPEN	HIGH	LOW	RANGE	CLOSE	SETTLE	CHANGE	CHANGE %	VOLUME
20 Sep	17970	18068	17839	229	17970	17970	↓ 10	0.06	--

WEEKLY		SEPTEMBER		2023	
HIGH	LOW	HIGH	LOW	HIGH	LOW
18131 (18/Sep)	17839 (20/Sep)	18898 (04/Sep)	17839 (20/Sep)	22799 (27/Jan)	17542 (21/Aug)



Disclaimer

All contents of this report have been prepared by the Research Dept. of Valbury Asia Futures and are provided solely for informational purpose. We have taken reasonable measures to ensure the accuracy of the report, however, do not guarantee its accuracy and will not accept liability for any consequential loss or damage which may arise directly or indirectly from any use of the report.

Published by: RESEARCH DEPARTMENT – PT VALBURY ASIA FUTURES
Menara Karya 9th Floor, Jl. HR Rasuna Said Blok X-5 Kav. 1-2 Jakarta 12950 Indonesia
Phone : +6221-25533777, Email: research@valbury.com

valbury 
PT. Valbury Asia Futures