

SUMMARY 15 September 2023

Counter	News	Trend	Support	Resistance
<u>DJIA Futures</u>	Dow Jones ditutup lebih tinggi karena data ekonomi yang lebih baik dari perkiraan meredakan kekhawatiran mengenai resesi tanpa meningkatkan kekhawatiran akan kenaikan suku bunga Federal Reserve minggu depan, sementara Arm Holdings melonjak dalam debut pasar sahamnya. Resistance utama 35542, support 34804	↑	34804	35542
<u>S&P 500</u>	S&P 500 ditutup lebih tinggi pada hari Kamis karena data ekonomi yang lebih baik dari perkiraan meredakan kekhawatiran mengenai resesi tanpa meningkatkan kekhawatiran akan kenaikan suku bunga Federal Reserve minggu depan, sementara Arm Holdings melonjak dalam debut pasar sahamnya. Resistance utama 4589.92, support 4498.42	↑	4498.42	4589.92
<u>Nasdaq</u>	SoftBank's Arm bernilai hampir \$60 miliar dalam debutnya yang kuat di bursa Nasdaq, dengan saham perancang chip tersebut menguat hampir 25% pada hari pertama perdagangannya. Resistance utama 15824.25, support 15447.00	↑	15447.00	15824.25
<u>Nikkei Futures</u>	Indeks Nikkei 225 menguat 1,41% ditutup pada 33,168 sementara Indeks Topix yang lebih luas naik 1,13% menjadi 2,406 pada hari Kamis, kembali menguat dari sesi sebelumnya karena data inflasi konsumen AS lebih tinggi dari perkiraan, namun tidak banyak mengubah ekspektasi bahwa Federal Reserve akan mempertahankan suku bunga stabil pada pertemuan mendatang. Investor juga mencerna data yang menunjukkan pesanan mesin di Jepang turun lebih besar dari perkiraan pada bulan Juli, sementara produksi industri turun lebih kecil dari perkiraan. Resistance utama 33388, support 32813	↑	32813	33388
<u>Hang Seng Futures</u>	Hang Seng menguat 38,70 poin atau 0,21% ditutup pada angka 18,047.92 pada hari Kamis, rebound dari pelemahan yang terjadi pada perdagangan sesi pagi ketika mencoba menjauh dari level terendah dalam 3 minggu, di tengah kenaikan dari sektor teknologi, konsumen, dan keuangan. Kenaikan kecil pada kontrak saham AS mendukung sentimen setelah data CPI bulan Agustus di negara dengan ekonomi terbesar di dunia tersebut diperkirakan tidak akan mengubah arah kebijakan The Fed pada pertemuan kebijakannya minggu depan. Resistance utama 18290, support 18006	↑	18006	18290

Closing Prices – 14 September 2023

	CLOSE	CHANGE		CLOSE	CHANGE
.DJI	34907.11	↑ 331.58 / 0.96%	.N225	33212.50	↑ 497.50 / 1.52%
/.SPX	4505.10	↑ 37.66 / 0.84%	.KS200	2572.89	↑ 38.19 / 1.51%
/.IXIC	13926.05	↑ 112.47 / 0.81%	.HSI	18053.00	↑ 43.00 / 0.24%
JPY=	147.48	↑ 0.06 / 0.04%	/.SSEC	3126.55	↑ 3.48 / 0.11%
KRW=	1325.67	↓ 4.10 / 0.31%	/Clc1 (Oil)	90.71	↑ 1.84 / 2.07%

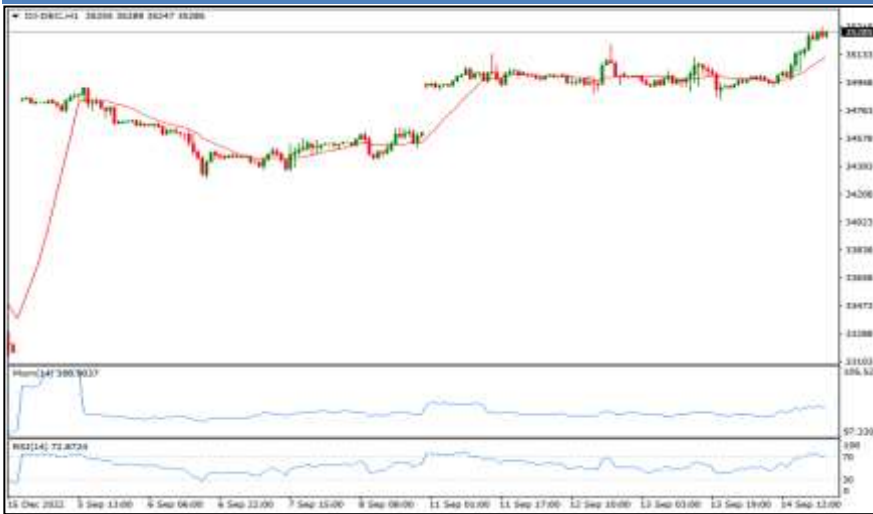
ECONOMIC INDICATOR

DATE	WIB	CTY	INDICATORS	PER	ACTUAL	FORECAST	PREV.	REV.
Mon/11-Sep-23	13:00	JP	Machine Tool Orders YoY	Aug P	-17.6%	--	-19.8%	--
	15:00	GB	BOE Chief Economist Huw Pill speaks					
	16:00	EZ	EU Commission Summer 2023 Interim Economic Forecast					
	22:00	US	NY Fed 1-Yr Inflation Expectations	Aug	3.6%	--	3.5%	--
Tue/12-Sep-23	06:00	GB	BOE's Catherine Mann speaks					
	07:30	AU	Westpac Consumer Conf SA MoM	Sep	-1.5%	--	-0.4%	--
	07:30	AU	Westpac Consumer Conf Index	Sep	79.7	--	81	--
	08:30	AU	NAB Business Confidence	Aug	2	--	2	1
	08:30	AU	NAB Business Conditions	Aug	13	--	10	11
	13:00	GB	Payrolled Employees Monthly Change	Aug		--	97k	--
	13:00	GB	Claimant Count Rate	Aug		--	4%	--
	13:00	GB	Jobless Claims Change	Aug	0.9k	--	29k	7.4k
	13:00	GB	Average Weekly Earnings 3M/YoY	Jul	8.5%	8.2%	8.4%	--
	13:00	GB	Weekly Earnings ex Bonus 3M/YoY	Jul	7.8%	7.8%	7.8%	--
	13:00	GB	ILO Unemployment Rate 3Mths	Jul	4.3%	4.3%	4.2%	--
	13:00	GB	Employment Change 3M/3M	Jul	-207k	-185k	-66k	--
	16:00	EZ	ZEW Survey Expectations	Sep	-8.9	-6.2	-5.5	--
	16:00	DE	ZEW Survey Expectations	Sep	-11.4	-15	-12.3	--
	16:00	DE	ZEW Survey Current Situation	Sep	-79.4	-75	-71.3	--
	17:00	US	NFIB Small Business Optimism	Aug	91.3	91.6	91.9	--
	19:45	DE	Current Account Balance	Jul	€18.7b	--	€29.6b	€28.4b
Wed/13-Sep-23	06:50	JP	PPI YoY	Aug	3.2%	3.2%	3.6%	3.4%
	06:50	JP	PPI MoM	Aug	0.3%	0.1%	0.1%	--
	06:50	JP	BSI Large All Industry QoQ	3Q		--	2.7	--
	06:50	JP	BSI Large Manufacturing QoQ	3Q	5.4%	0.2%	-0.4%	--
	13:00	GB	Monthly GDP (MoM)	Jul	-0.5%	-0.2%	0.5%	--
	13:00	GB	Monthly GDP (3M/3M)	Jul	0.2%	0.3%	0.2%	--
	13:00	GB	Industrial Production MoM	Jul	-0.7%	-0.6%	1.8%	--
	13:00	GB	Industrial Production YoY	Jul	0.4%	0.5%	0.7%	--
	13:00	GB	Manufacturing Production MoM	Jul	-0.8%	-1%	2.4%	--
	13:00	GB	Manufacturing Production YoY	Jul	3%	2.7%	3.1%	--
	13:00	GB	Index of Services MoM	Jul		--	0.2%	--
	13:00	GB	Index of Services 3M/3M	Jul	0.1%	0.2%	0.1%	--
	13:00	GB	Construction Output MoM	Jul	-0.5%	-0.5%	1.6%	--
	13:00	GB	Construction Output YoY	Jul	2.8%	2.8%	4.6%	--
	13:00	GB	Visible Trade Balance GBP/Mn	Jul	£-14064m	£-16000m	£-15455m	--
	13:00	GB	Trade Balance GBP/Mn	Jul	£-3446m	--	£-4787m	--
	13:00	GB	Visible Trade Balance Ex Precious Metals	Jul		--	£-15922m	--
	13:00	GB	Trade Balance Ex Precious Metals	Jul		--	£-5254m	--
	15:30	HK	PPI YoY	2Q	-0.2%	--	1%	--
	15:30	HK	Industrial Production YoY	2Q	2.6%	--	3.9%	3.8%
	16:00	EZ	Industrial Production SA MoM	Jul	-1.1%	-0.7%	0.5%	0.4%
	16:00	EZ	Industrial Production WDA YoY	Jul	-2.2%	-0.3%	-1.2%	-1.1%
	19:30	US	CPI MoM	Aug	0.6%	0.6%	0.2%	--
	19:30	US	CPI Ex Food and Energy MoM	Aug	0.3%	0.2%	0.2%	--
	19:30	US	CPI YoY	Aug	3.7%	3.6%	3.2%	--
	19:30	US	CPI Ex Food and Energy YoY	Aug	4.3%	4.3%	4.7%	--
	19:30	US	CPI Index NSA	Aug	307.026	306.976	305.691	--
19:30	US	CPI Core Index SA	Aug	306.269	--	304.348	--	
19:30	US	Real Avg Hourly Earning YoY	Aug		--	1.1%	--	
19:30	US	Real Avg Weekly Earnings YoY	Aug		--	0.2%	--	
21:30	US	DOE U.S. Crude Oil Inventories	8-Sep	3954k	-1912k	-6307k	--	
21:30	US	DOE Cushing OK Crude Inventory	8-Sep	-2450k	--	-1750k	--	
21:30	US	DOE U.S. Gasoline Inventories	8-Sep	5560k	237k	-2666k	--	
21:30	US	DOE U.S. Distillate Inventory	8-Sep	3931k	1303k	679k	--	
21:30	US	DOE U.S. Refinery Utilization	8-Sep	0.6%	--	-0.2%	--	
Thu/14-Sep-23	01:00	US	Monthly Budget Statement	Aug	\$89b	\$-240b	\$-221b	--
	06:50	JP	Core Machine Orders MoM	Jul	-1.1%	-0.9%	2.7%	--
	06:50	JP	Core Machine Orders YoY	Jul	-13%	-10.7%	-5.8%	--
	08:00	AU	Consumer Inflation Expectation	Sep	4.6%	--	4.9%	--
	08:30	AU	Employment Change	Aug	64.9k	23k	-14.6k	-1.4k
	08:30	AU	Unemployment Rate	Aug	3.7%	3.7%	3.7%	--
	08:30	AU	Full Time Employment Change	Aug	2.8k	--	-24.2k	-18.7k
	08:30	AU	Part Time Employment Change	Aug	62.1k	--	9.6k	17.3k
	08:30	AU	Participation Rate	Aug	67%	66.7%	66.7%	66.9%
	11:30	JP	Industrial Production MoM	Jul F	-1.8%	-2%	2.4%	--
	11:30	JP	Industrial Production YoY	Jul F	-2.3%	-2.5%	0.0%	--
11:30	JP	Capacity Utilization MoM	Jul	-2.2%	--	3.8%	--	

	13:30	CH	Producer & Import Prices YoY	Aug	-0.8%	--	-0.6%	--
	13:30	CH	Producer & Import Prices MoM	Aug	-0.2%	--	-0.1%	--
	19:15	EZ	ECB Main Refinancing Rate	14-Sep	4.50%	4.25%	4.25%	--
	19:15	EZ	ECB Marginal Lending Facility	14-Sep	4.75%	4.75%	4.50%	--
	19:15	EZ	ECB Deposit Facility Rate	14-Sep	4%	3.75%	3.75%	--
	19:30	US	Retail Sales Advance MoM	Aug	0.6%	0.2%	0.7%	0.5%
	19:30	US	Retail Sales Ex Auto MoM	Aug	0.6%	0.4%	1%	0.7%
	19:30	US	Retail Sales Ex Auto and Gas	Aug	0.2%	0.0%	1%	0.7%
	19:30	US	PPI Final Demand MoM	Aug	0.7%	0.4%	0.3%	--
	19:30	US	Initial Jobless Claims	9-Sep	220k	225k	216k	217k
	19:30	US	Retail Sales Control Group	Aug	0.1%	-0.2%	1%	0.7%
	19:30	US	PPI Ex Food and Energy MoM	Aug	0.2%	0.2%	0.3%	0.4%
	19:30	US	Continuing Claims	2-Sep	1688k	1695k	1679k	1684k
	19:30	US	PPI Ex Food, Energy, Trade MoM	Aug	0.3%	--	0.2%	0.3%
	19:30	US	PPI Final Demand YoY	Aug	1.6%	1.2%	0.8%	--
	19:30	US	PPI Ex Food and Energy YoY	Aug	2.2%	2.2%	2.4%	--
	19:30	US	PPI Ex Food, Energy, Trade YoY	Aug	3%	--	2.7%	2.9%
	19:45	EZ	ECB President Christine Lagarde Holds Press Conference					
	21:00	US	Business Inventories	Jul	0.0%	0.1%	0.0%	-0.1%
Fri/15-Sep-23	N/A	DE	Germany Sovereign Rating to be reviewed by Fitch					
	05:30	NZ	BusinessNZ Manufacturing PMI	Aug		--	46.3	--
	09:00	CN	Industrial Production YoY	Aug		3.8%	3.7%	--
	09:00	CN	Industrial Production YTD YoY	Aug		3.8%	3.8%	--
	09:00	CN	Retail Sales YoY	Aug		3%	2.5%	--
	09:00	CN	Retail Sales YTD YoY	Aug		6.8%	7.3%	--
	09:00	CN	Surveyed Jobless Rate	Aug		5.3%	5.3%	--
	11:30	JP	Tertiary Industry Index MoM	Jul		0.3%	-0.4%	--
	15:30	GB	BoE/Ipsos Inflation Next 12 Mths	Aug		--	3.5%	--
	16:00	EZ	Trade Balance SA	Jul		--	12.5b	--
	16:00	EZ	Trade Balance NSA	Jul		--	23.0b	--
	19:30	CA	Manufacturing Sales MoM	Jul		--	-1.7%	--
	19:30	US	Import Price Index MoM	Aug		0.3%	0.4%	--
	19:30	US	Import Price Index ex Petroleum MoM	Aug		--	0.0%	--
	19:30	US	Import Price Index YoY	Aug		--	-4.4%	--
	19:30	US	Export Price Index MoM	Aug		0.3%	0.7%	--
	19:30	US	Export Price Index YoY	Aug		--	-7.9%	--
	19:30	US	Empire Manufacturing	Sep		-10.7	-19	--
	20:00	CA	Existing Home Sales MoM	Aug		--	-0.7%	--
	20:15	US	Industrial Production MoM	Aug		0.1%	1%	--
	20:15	US	Capacity Utilization	Aug		79.3%	79.3%	--
	20:15	US	Manufacturing (SIC) Production	Aug		0.1%	0.5%	--
	21:00	US	U. of Mich. Sentiment	Sep P		69.4	69.5	--
	21:00	US	U. of Mich. Current Conditions	Sep P		--	75.7	--
	21:00	US	U. of Mich. Expectations	Sep P		--	65.5	--
	21:00	US	U. of Mich. 1 Yr Inflation	Sep P		--	3.5%	--
	21:00	US	U. of Mich. 5-10 Yr Inflation	Sep P		--	3%	--
Sat/16-Sep-23	00:00	US	Baker Hughes U.S. Rig Count	15-Sep		--	--	--

Dow Jones (DJ – DEC)

Exp. Date: 14 December 2023



RESISTANCE	36280	
	35799	
	35542	
SUPPORT	34804	
	34323	
	34066	
SUGGESTION	BUY	35235
	SELL	---
	S/L	35085
	T/P:	35460 35635

DATE	OPEN	HIGH	LOW	RANGE	CLOSE	SETTLE	CHANGE	CHANGE %	VOLUME
14 Sep (DJ-SEP)	34600	34984	34580	404	34952	34952	↑ 360	1.04	--
14 Sep (DJ-DEC)	34927	35318	34909	409	35285	35285	↑ 364	1.04	--

WEEKLY		SEPTEMBER		2023	
HIGH	LOW	HIGH	LOW	HIGH	LOW
35318 (14/Sep)	34512 (13/Sep)	35318 (14/Sep)	34316 (06/Sep)	35837 (27/Jul)	31422 (15/Mar)

S&P 500 (SP – DEC)

Exp. Date: 14 December 2023



RESISTANCE	4681.42	
	4621.33	
	4589.92	
SUPPORT	4498.42	
	4438.33	
	4406.92	
SUGGESTION	BUY	4555.00
	SELL	---
	S/L	4525.00
	T/P:	4590.00 4620.00

DATE	OPEN	HIGH	LOW	RANGE	CLOSE	SETTLE	CHANGE	CHANGE %	VOLUME
14 Sep (S&P-SEP)	4471.75	4512.25	4469.75	42.50	4509.75	4509.75	↑ 39.25	0.88	--
14 Sep (S&P-DEC)	4520.50	4561.25	4518.50	42.75	4558.50	4558.50	↑ 39.25	0.87	--

WEEKLY		SEPTEMBER		2023	
HIGH	LOW	HIGH	LOW	HIGH	LOW
4561.25 (14/Sep)	4446.50 (13/Sep)	4561.25 (14/Sep)	4433.75 (07/Sep)	4633.75 (27/Jul)	3808.50 (13/Mar)

Nasdaq (NQ – DEC)

Exp. Date: 14 December 2023



RESISTANCE	16201.50	
	15957.25	
	15824.25	
SUPPORT	15447.00	
	15202.75	
	15069.75	
SUGGESTION	BUY	15660.00
	SELL	---
	S/L	15580.00
	T/P:	15790.00
		15860.00

DATE	OPEN	HIGH	LOW	RANGE	CLOSE	SETTLE	CHANGE	CHANGE %	VOLUME
14 Sep (NQ-SEP)	15373.75	15516.50	15335.75	180.75	15496.00	15496.00	↑ 124.00	0.81	--
14 Sep (NQ-DEC)	15568.25	15713.00	15530.50	182.50	15691.25	15691.25	↑ 124.00	0.80	--

WEEKLY		SEPTEMBER		2023	
HIGH	LOW	HIGH	LOW	HIGH	LOW
15713.00 (14/Sep)	15213.00 (13/Sep)	15713.00 (14/Sep)	15156.25 (07/Sep)	16059.75 (19/Jul)	10750.00 (06/Jan)

Nikkei (NIK– DEC)

Exp. Date: 07 December 2023



RESISTANCE	33963	
	33582	
	33388	
SUPPORT	32813	
	32432	
	32238	
SUGGESTION	BUY	33145
	SELL	---
	S/L	32945
	T/P:	33495
		33745

DATE	OPEN	HIGH	LOW	RANGE	CLOSE	SETTLE	CHANGE	CHANGE%	VOLUME
14 Sep	32655	33200	32625	575	33195	33195	↑ 555	1.70	--

WEEKLY		SEPTEMBER		2023	
HIGH	LOW	HIGH	LOW	HIGH	LOW
33200 (14/Sep)	32165 (11/Sep)	33200 (14/Sep)	32165 (11/Sep)	33955 (16/Jun)	25565 (03/Jan)

Hang Seng (HAS – SEP)

Exp. Date: 29 September 2023



RESISTANCE	18574	
	18401	
	18290	
SUPPORT	18006	
	17833	
	17722	
SUGGESTION	BUY	18130
	SELL	---
	S/L	18030
	T/P:	18355 18480

DATE	OPEN	HIGH	LOW	RANGE	CLOSE	SETTLE	CHANGE	CHANGE %	VOLUME
14 Sep	18115	18228	17944	284	18179	18179	↑ 132	0.73	--

WEEKLY		SEPTEMBER		2023	
HIGH	LOW	HIGH	LOW	HIGH	LOW
18230 (13/Sep)	17848 (11/Sep)	18898 (04/Sep)	17848 (11/Sep)	22799 (27/Jan)	17542 (21/Aug)

PT. Valbury Asia Futures

Disclaimer

All contents of this report have been prepared by the Research Dept. of Valbury Asia Futures and are provided solely for informational purpose. We have taken reasonable measures to ensure the accuracy of the report, however, do not guarantee its accuracy and will not accept liability for any consequential loss or damage which may arise directly or indirectly from any use of the report.

Published by: RESEARCH DEPARTMENT – PT VALBURY ASIA FUTURES
Menara Karya 9th Floor, Jl. HR Rasuna Said Blok X-5 Kav. 1-2 Jakarta 12950 Indonesia
Phone : +6221-25533777, Email: research@valbury.com

valbury 
PT. Valbury Asia Futures