

SUMMARY 04 Juni 2024

Counter	News	Trend	Support	Resistance
<u>DJIA Futures</u>	Bursa saham AS sebagian besar ditutup lebih rendah dalam sesi perdagangan yang berfluktuatif pada hari Senin menyusul data sektor manufaktur yang lemah dan gangguan pada NYSE menyebabkan penghentian perdagangan di beberapa ekuitas. Resistance utama 38939, support 38355	↓	38355	38939
<u>S&P 500</u>	Bursa saham AS sebagian besar ditutup lebih rendah dalam sesi perdagangan yang berfluktuatif pada hari Senin menyusul data sektor manufaktur yang lemah dan gangguan pada NYSE menyebabkan penghentian perdagangan di beberapa ekuitas. Resistance utama 5326.00, support 5260.00	↑	5260.00	5326.00
<u>Nasdaq</u>	Bursa saham AS sebagian besar ditutup lebih rendah dalam sesi perdagangan yang berfluktuatif pada hari Senin menyusul data sektor manufaktur yang lemah dan gangguan pada NYSE menyebabkan penghentian perdagangan di beberapa ekuitas. Resistance utama 18796.08, support 18477.83	↑	18477.83	18796.08
<u>Nikkei Futures</u>	Indeks Nikkei 225 menguat 1,13% ditutup pada 38.923 sementara Indeks Topix yang lebih luas naik 0,92% menjadi 2.798 pada hari Senin, dengan saham-saham Jepang naik untuk sesi kedua berturut-turut dan mengambil isyarat dari keunggulan kuat di Wall Street setelah sebuah laporan menunjukkan bahwa indeks inti AS Inflasi PCE mereda di bulan April. Di dalam negeri, investor mencerna data yang menunjukkan perusahaan-perusahaan Jepang meningkatkan belanja pabrik dan peralatan sebesar 6,8% tahun-ke-tahun pada kuartal pertama tahun 2024, meningkat selama dua belas kuartal berturut-turut tetapi melambat dari kenaikan 16,4% pada kuartal keempat tahun 2023. Resistance utama 39017, support 38402	↑	38402	39017
<u>Hang Seng Futures</u>	Hang Seng menguat 323,43 poin atau 1,79% ditutup pada 18,403.04 pada hari Senin, menghentikan momentum penurunan dalam empat sesi sebelumnya menyusul data PMI Tiongkok yang optimis dari perusahaan survei swasta yang menunjukkan aktivitas manufaktur mengalami kenaikan terbesar dalam 23 bulan di bulan Mei. Angka tersebut berbeda dengan data resmi yang menunjukkan bahwa sektor ini sedang mengalami kontraksi. Sementara itu, muncul spekulasi bahwa Fed AS pada akhirnya akan mulai melonggarkan kebijakan moneternya menyusul lemahnya data PCE AS pada Jumat lalu. Resistance utama 18418, support 18052	↑	18052	18418

Closing Prices – 03 Juni 2024

	CLOSE	CHANGE		CLOSE	CHANGE
.DJI	38571.03	↓ 115.29 / 0.30%	.N225	38940.50	↑ 445.00 / 1.16%
/.SPX	5283.40	↑ 5.89 / 0.11%	.KS200	2682.45	↑ 45.93 / 1.74%
/.IXIC	16828.63	↑ 93.62 / 0.56%	.HSI	18403.04	↑ 323.43 / 1.79%
JPY=	156.09	↓ 1.22 / 0.78%	/.SSEC	3078.49	↓ 8.32 / 0.27%
KRW=	1375..99	↓ 9.62 / 0.69%	/Clc1 (Oil)	74.01	↓ 3.22 / 4.17%

ECONOMIC INDICATOR

DATE	WIB	CTY	INDICATORS	PER	ACTUAL	FORECAST	PREV.	REV.
Mon/03-Jun-24	06:00	AU	Judo Bank Australia PMI Mfg	May F	49.7	--	49.6	--
		All	NZ	Bank Holiday (King's Birthday)				
	07:30	JP	Jibun Bank Japan PMI Mfg	May F	50.4	50.5	49.6	--
	08:00	AU	Melbourne Institute Inflation YoY	May		--	3.7%	--
	08:00	AU	Melbourne Institute Inflation MoM	May	0.3%	--	0.1%	--
	08:45	CN	Caixin China PMI Mfg	May	51.7	51.5	51.4	--
	14:30	CH	PMI Manufacturing	May	46.4	45.4	41.4	--
	14:30	CH	PMI Services	May		--	55.6	--
	14:55	DE	HCOB Germany Manufacturing PMI	May F	45.4	45.4	42.5	--
	15:00	EZ	HCOB Eurozone Manufacturing PMI	May F	47.3	47.4	45.7	--
	15:30	GB	S&P Global UK Manufacturing PMI	May F	51.2	51.3	49.1	--
	20:30	CA	S&P Global Canada Manufacturing PMI	May	49.3	50.2	49.4	--
	20:45	US	S&P Global US Manufacturing PMI	May F	51.3	50.9	50	--
	21:00	US	Construction Spending MoM	Apr	-0.1%	0.2%	-0.2%	--
	21:00	US	ISM Manufacturing	May	48.7	49.6	49.2	--
	21:00	US	ISM Prices Paid	May	57	60	60.9	--
21:00	US	ISM New Orders	May	45.4	49.4	49.1	--	
21:00	US	ISM Employment	May	51.1	48.5	48.6	--	
Tue/04-Jun-24	08:30	AU	Net Exports of GDP	1Q		--	0.6	--
	08:30	AU	BoP Current Account Balance	1Q		--	A\$11.8b	--
	13:30	CH	CPI YoY	May		--	1.4%	--
	13:30	CH	CPI MoM	May		--	0.3%	--
	13:30	CH	CPI EU Harmonized MoM	May		--	0.5%	--
	13:30	CH	CPI EU Harmonized YoY	May		--	1.4%	--
	13:30	CH	CPI Core YoY	May		--	1.2%	--
	14:55	DE	Unemployment Change (000's)	May		--	10k	--
	14:55	DE	Unemployment Claims Rate SA	May		--	5.9%	--
	21:00	US	JOLTS Job Openings	Apr		--	8488k	--
	21:00	US	Factory Orders	Apr		--	1.6%	0.8%
	21:00	US	Factory Orders Ex Trans	Apr		--	0.5%	0.4%
	21:00	US	Durable Goods Orders	Apr F		--	0.7%	--
	21:00	US	Durables Ex Transportation	Apr F		--	0.4%	--
	21:00	US	Cap Goods Orders Nondef Ex Air	Apr F		--	0.3%	--
	21:00	US	Cap Goods Ship Nondef Ex Air	Apr F		--	0.4%	--
Wed/05-Jun-24	05:45	NZ	Terms of Trade Index QoQ	1Q		--	-7.8%	--
	06:00	AU	Judo Bank Australia PMI Composite	May F		--	52.6	--
	06:00	AU	Judo Bank Australia PMI Services	May F		--	53.1	--
	06:30	JP	Labor Cash Earnings YoY	Apr		--	0.6%	1%
	06:30	JP	Real Cash Earnings YoY	Apr		--	-2.5%	-2.1%
	06:30	JP	Cash Earnings - Same Sample Base YoY	Apr		--	2.2%	--
	06:30	JP	Scheduled Full-Time Pay - Same Base YoY	Apr		--	2.3%	--
	07:30	HK	S&P Global Hong Kong PMI	May		--	50.6	--
	07:30	JP	Jibun Bank Japan PMI Composite	May F		--	52.4	--
	07:30	JP	Jibun Bank Japan PMI Services	May F		--	53.6	--
	08:30	AU	GDP SA QoQ	1Q		--	0.2%	--
	08:30	AU	GDP YoY	1Q		--	1.5%	--
	08:45	CN	Caixin China PMI Composite	May		--	52.8	--
	08:45	CN	Caixin China PMI Services	May		--	52.5	--
	14:55	DE	HCOB Germany Services PMI	May F		--	53.9	--
	14:55	DE	HCOB Germany Composite PMI	May F		--	52.2	--
	15:00	EZ	HCOB Eurozone Services PMI	May F		--	53.3	--
	15:00	EZ	HCOB Eurozone Composite PMI	May F		--	52.3	--
	15:30	GB	S&P Global UK Services PMI	May F		--	52.9	--
	15:30	GB	S&P Global UK Composite PMI	May F		--	52.8	--
	16:00	EZ	PPI MoM	Apr		--	-0.4%	--
	16:00	EZ	PPI YoY	Apr		--	-7.8%	--
	19:15	US	ADP Employment Change	May		--	192k	--
	20:30	CA	S&P Global Canada Composite PMI	May		--	49.3	--
	20:30	CA	S&P Global Canada Services PMI	May		--	49.3	--
	20:45	CA	Bank of Canada Rate Decision	5-Jun		--	5%	--
	20:45	US	S&P Global US Services PMI	May F		--	54.8	--
20:45	US	S&P Global US Composite PMI	May F		--	54.4	--	
21:00	US	ISM Services Index	May		--	49.4	--	
21:00	US	ISM Services Prices Paid	May		--	59.2	--	
21:00	US	ISM Services Employment	May		--	45.9	--	
21:00	US	ISM Services New Orders	May		--	52.2	--	
21:30	US	DOE U.S. Crude Oil Inventories	31-May		--	-4156k	--	
21:30	US	DOE Cushing OK Crude Inventory	31-May		--	-1766k	--	

	21:30	US	DOE U.S. Gasoline Inventories	31-May	--	2022k	--
	21:30	US	DOE U.S. Distillate Inventory	31-May	--	2544k	--
	21:30	US	DOE U.S. Refinery Utilization	31-May	--	2.6%	--
Thu/06-Jun-24	08:30	AU	Trade Balance	Apr	--	A\$5024m	--
	08:30	AU	Exports MoM	Apr	--	0.1%	--
	08:30	AU	Imports MoM	Apr	--	4.2%	--
	08:30	JP	BOJ Board Nakamura Speech in Sapporo				
	08:30	JP	BOJ Governor Nakamura Speech in Sapporo				
	12:45	CH	Unemployment Rate	May	--	2.3%	--
	12:45	CH	Unemployment Rate SA	May	--	2.3%	--
	13:00	DE	Factory Orders MoM	Apr	--	-0.4%	--
	13:00	DE	Factory Orders WDA YoY	Apr	--	-1.9%	--
	14:30	DE	HCOB Germany Construction PMI	May	--	37.5	--
	15:30	GB	BOE Decision Maker Panel survey				
	15:30	GB	S&P Global UK Construction PMI	May	--	53	--
	15:30	GB	DMP 3M Output Price Expectations	May	--	4%	--
	15:30	GB	DMP 1 Year CPI Expectations	May	--	2.9%	--
	16:00	EZ	Retail Sales MoM	Apr	--	0.8%	--
	16:00	EZ	Retail Sales YoY	Apr	--	0.7%	--
	19:15	EZ	ECB Main Refinancing Rate	6-Jun	--	4.50%	--
	19:15	EZ	ECB Marginal Lending Facility	6-Jun	--	4.75%	--
	19:15	EZ	ECB Deposit Facility Rate	6-Jun	--	4.00%	--
	19:30	US	Nonfarm Productivity	1Q F	--	0.3%	--
	19:30	US	Unit Labor Costs	1Q F	--	4.7%	--
	19:30	US	Trade Balance	Apr	--	-\$69.4b	--
	19:30	US	Initial Jobless Claims	1-Jun	--	219k	--
	19:30	US	Continuing Claims	25-May	--	1791k	--
	19:45	EZ	ECB President Christine Lagarde Holds Press Conference				
	21:00	CA	Ivey Purchasing Managers Index SA	May	--	63	--
Fri/07-Jun-24	N/A	CN	Exports YoY	May	--	1.5%	--
	N/A	CN	Imports YoY	May	--	8.4%	--
	N/A	CN	Trade Balance	May	--	\$72.35b	--
	N/A	CN	Exports YoY CNY	May	--	5.1%	--
	N/A	CN	Imports YoY CNY	May	--	12.2%	--
	N/A	CN	Trade Balance CNY	May	--	513.45b	--
	05:45	NZ	Mfg Activity SA QoQ	1Q	--	-0.7%	--
	05:45	NZ	Mfg Activity Volume QoQ	1Q	--	-0.6%	--
	10:00	AU	RBA's Hauser-Fireside Chat				
	12:00	JP	Coincident Index	Apr P	--	113.6	--
	12:00	JP	Leading Index CI	Apr P	--	112.2	--
	13:00	DE	Industrial Production SA MoM	Apr	--	-0.4%	--
	13:00	DE	Industrial Production WDA YoY	Apr	--	-3.3%	--
	13:00	DE	Trade Balance SA	Apr	--	22.3b	22.2b
	13:00	DE	Exports SA MoM	Apr	--	0.9%	1.1%
	13:00	DE	Imports SA MoM	Apr	--	0.3%	0.5%
	14:00	EZ	ECB's Nagel Speaks in Berlin				
	15:00	EZ	ECB's Schnabel Speaks in Berlin				
	16:00	EZ	GDP SA QoQ	1Q F	--	0.3%	--
	16:00	EZ	GDP SA YoY	1Q F	--	0.4%	--
	16:00	EZ	Employment QoQ	1Q F	--	0.3%	--
	16:00	EZ	Employment YoY	1Q F	--	1%	--
	19:30	CA	Net Change in Employment	May	--	90.4k	--
	19:30	CA	Part Time Employment Change	May	--	50.3k	--
	19:30	CA	Full Time Employment Change	May	--	40.1k	--
	19:30	CA	Unemployment Rate	May	--	6.1%	--
	19:30	CA	Hourly Wage Rate Permanent Employees YoY	May	--	4.8%	--
	19:30	US	Two-Month Payroll Net Revision	May	--	-22k	--
	19:30	US	Change in Nonfarm Payrolls	May	--	175k	--
	19:30	US	Change in Private Payrolls	May	--	167k	--
	19:30	US	Change in Manufact. Payrolls	May	--	8k	--
	19:30	US	Unemployment Rate	May	--	3.9%	--
	19:30	US	Average Hourly Earnings MoM	May	--	0.2%	--
	19:30	US	Average Hourly Earnings YoY	May	--	3.9%	--
	19:30	US	Average Weekly Hours All Employees	May	--	34.3	--
	19:30	US	Labor Force Participation Rate	May	--	62.7%	--
	19:30	US	Underemployment Rate	May	--	7.4%	--
	21:00	US	Wholesale Trade Sales MoM	Apr	--	-1.3%	--
	21:00	US	Wholesale Inventories MoM	Apr F	--	0.2%	--
	23:00	US	Fed's Cook Gives Commencement Speech				
Sat/08-Jun-24	00:00	US	Baker Hughes U.S. Rig Count	7-Jun	--	--	--
	02:00	US	Consumer Credit	Apr	--	\$6.274b	--

Dow Jones (DJ – JUN)

Exp. Date: 13 June 2024



RESISTANCE	39523	
	39218	
	38939	
SUPPORT	38355	
	38050	
	37771	
SUGGESTION	BUY	---
	SELL	38710
	S/L	38910
	T/P:	38360 38110

DATE	OPEN	HIGH	LOW	RANGE	CLOSE	SETTLE	CHANGE	CHANGE %	VOLUME
03 Jun	38830	38914	38330	584	38659	38659	↓ 135	0.35	--

WEEKLY		JUNE		2024	
HIGH	LOW	HIGH	LOW	HIGH	LOW
38914 (03/Jun)	38330 (03/Jun)	38914 (03/Jun)	38330 (03/Jun)	40353 (01/Apr)	37300 (18/Jan)

S&P 500 (SP – JUN)

Exp. Date: 13 June 2024



RESISTANCE	5392.00	
	5352.25	
	5326.00	
SUPPORT	5260.00	
	5220.25	
	5194.00	
SUGGESTION	BUY	5294.00
	SELL	---
	S/L	5259.00
	T/P:	5339.00 5364.00

DATE	OPEN	HIGH	LOW	RANGE	CLOSE	SETTLE	CHANGE	CHANGE %	VOLUME
03 Jun	5300.00	5312.50	5246.50	66.00	5299.75	5299.75	↑ 3.50	0.07	--

WEEKLY		JUNE		2024	
HIGH	LOW	HIGH	LOW	HIGH	LOW
5312.50 (03/Jun)	5246.50 (03/Jun)	5312.50 (03/Jun)	5246.50 (03/Jun)	5367.50 (23/May)	4701.25 (05/Jan)

Nasdaq (NQ – JUN)

Exp. Date: 13 June 2024



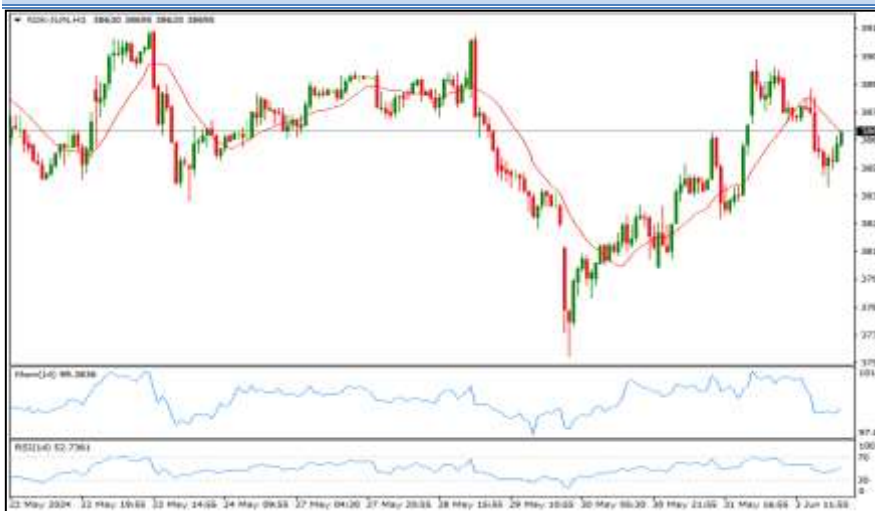
RESISTANCE	19114.33	
	18933.67	
	18796.08	
SUPPORT	18477.83	
	18297.17	
	18159.58	
SUGGESTION	BUY	18610.00
	SELL	---
	S/L	18510.00
	T/P:	18785.00 18960.00

DATE	OPEN	HIGH	LOW	RANGE	CLOSE	SETTLE	CHANGE	CHANGE %	VOLUME
03 Jun	18582.25	18753.00	18434.75	318.25	18658.50	18658.50	↑ 85.00	0.46	--

WEEKLY		JUNE		2024	
HIGH	LOW	HIGH	LOW	HIGH	LOW
18753.00 (03/Jun)	18434.75 (03/Jun)	18753.00 (03/Jun)	18434.75 (03/Jun)	19019.75 (23/May)	16335.00 (05/Jan)

Nikkei (NIK– JUN)

Exp. Date: 06 June 2024



RESISTANCE	39632	
	39338	
	39017	
SUPPORT	38402	
	38108	
	37787	
SUGGESTION	BUY	38600
	SELL	---
	S/L	38400
	T/P:	38950 39200

DATE	OPEN	HIGH	LOW	RANGE	CLOSE	SETTLE	CHANGE	CHANGE%	VOLUME
03 Jun	38775	39045	38430	615	38695	38695	↓ 30	0.08	--

WEEKLY		JUNE		2024	
HIGH	LOW	HIGH	LOW	HIGH	LOW
39045 (03/Jun)	38430 (03/Jun)	39045 (03/Jun)	38430 (03/Jun)	40915 (21/Mar)	32665 (04/Jan)

Hang Seng (HAS – JUN)

Exp. Date: 27 June 2024



RESISTANCE	18784	
	18636	
	18418	
SUPPORT	18052	
	17904	
	17686	
SUGGESTION	BUY	18150
	SELL	---
	S/L	18025
	T/P:	18375 18550

DATE	OPEN	HIGH	LOW	RANGE	CLOSE	SETTLE	CHANGE	CHANGE %	VOLUME
03 Jun	18236	18488	18122	366	18200	18200	↑ 117	0.65	--

WEEKLY		JUNE		2024	
HIGH	LOW	HIGH	LOW	HIGH	LOW
18488 (03/Jun)	18122 (03/Jun)	18488 (03/Jun)	18122 (03/Jun)	19770 (17/May)	14796 (22/Jan)

valbury
PT. Valbury Asia Futures

Disclaimer

All contents of this report have been prepared by the Research Dept. of Valbury Asia Futures and are provided solely for informational purpose. We have taken reasonable measures to ensure the accuracy of the report, however, do not guarantee its accuracy and will not accept liability for any consequential loss or damage which may arise directly or indirectly from any use of the report.

Published by: RESEARCH DEPARTMENT – PT VALBURY ASIA FUTURES
Menara Karya 9th Floor, Jl. HR Rasuna Said Blok X-5 Kav. 1-2 Jakarta 12950 Indonesia
Phone : +6221-25533777, Email: research@valbury.com

valbury 
PT. Valbury Asia Futures