

## SUMMARY 01 Mei 2024

Counter	News	Trend	Support	Resistance
<b><u>DJIA Futures</u></b>	Saham-saham AS berakhir lebih rendah pada hari Selasa karena pasar mempertimbangkan data ekonomi yang menunjukkan kenaikan biaya tenaga kerja dan memburuknya kepercayaan konsumen menjelang pertemuan kebijakan utama Federal Reserve untuk memutuskan arah suku bunga. Resistance utama 38390, support 37746	↓	<b>37746</b>	<b>38390</b>
<b><u>S&amp;P 500</u></b>	Saham-saham AS berakhir lebih rendah pada hari Selasa karena pasar mempertimbangkan data ekonomi yang menunjukkan kenaikan biaya tenaga kerja dan memburuknya kepercayaan konsumen menjelang pertemuan kebijakan utama Federal Reserve untuk memutuskan arah suku bunga. Resistance utama 5122.33, support 5029.58	↓	<b>5029.58</b>	<b>5122.33</b>
<b><u>Nasdaq</u></b>	Saham-saham AS berakhir lebih rendah pada hari Selasa karena pasar mempertimbangkan data ekonomi yang menunjukkan kenaikan biaya tenaga kerja dan memburuknya kepercayaan konsumen menjelang pertemuan kebijakan utama Federal Reserve untuk memutuskan arah suku bunga. Resistance utama 17813.83, support 17408.08	↓	<b>17408.08</b>	<b>17813.83</b>
<b><u>Nikkei Futures</u></b>	Indeks Nikkei 225 melonjak 1,24% dan ditutup pada 38.405 pada perdagangan pasca-liburan pada hari Selasa mencapai level tertinggi dalam dua minggu terakhir dan mengambil isyarat dari keunggulan positif di Wall Street karena pendapatan korporasi yang kuat mengangkat sentimen pasar. Resistance utama 38463, support 37948	↓	<b>37948</b>	<b>38463</b>
<b><u>Hang Seng Futures</u></b>	Hang Seng naik 16,12 poin atau 0,1% menjadi ditutup pada 17.763,03 pada hari Selasa menyusul sedikit kerugian pada transaksi pagi hari setelah aktivitas pabrik terbaru di China menunjukkan bahwa sektor manufaktur tumbuh lebih lanjut di bulan April. Resistance utama 17741, support 17415	↓	<b>17415</b>	<b>17741</b>

Closing Prices – 30 April 2024

	CLOSE	CHANGE		CLOSE	CHANGE
.DJI	37815.92	↓ 570.17 / 1.49%	.N225	38379.50	↑ 444.74 / 1.17%
/.SPX	5035.69	↓ 80.48 / 1.57%	.KS200	2692.05	↑ 4.61 / 0.17%
/.IXIC	15657.82	↓ 325.26 / 2.04%	.HSI	17763.03	↑ 16.12 / 0.09%
JPY=	157.80	↑ 1.56 / 1.00%	/.SSEC	3104.82	↓ 8.22 / 0.26%
KRW=	1382.18	↑ 4.34 / 0.31%	/CLc1 (Oil)	81.53	↓ 1.20 / 1.45%

ECONOMIC INDICATOR

DATE	WIB	CTY	INDICATORS	PER	ACTUAL	FORECAST	PREV.	REV.
<b>Mon/29-Apr-24</b>	ALL	JP	<b>Bank Holiday (Showa Day)</b>					
	16:00	EZ	Consumer Confidence	Apr F	-14.7	-14.7	-14.9	--
	16:00	EZ	Services Confidence	Apr	6	6.5	6.3	6.4
	16:00	EZ	Industrial Confidence	Apr	-10.5	-8.5	-8.8	-8.9
	16:00	EZ	Economic Confidence	Apr	95.6	96.9	96.3	96.2
	19:00	DE	CPI YoY	Apr P	2.2%	2.3%	2.2%	--
	19:00	DE	CPI MoM	Apr P	0.5%	0.6%	0.4%	--
	19:00	DE	CPI EU Harmonized MoM	Apr P	0.6%	0.6%	0.6%	--
	19:00	DE	CPI EU Harmonized YoY	Apr P	2.4%	2.3%	2.3%	--
<b>Tue/30-Apr-24</b>	06:30	JP	Jobless Rate	Mar	2.6%	2.5%	2.6%	--
	06:50	JP	Retail Sales YoY	Mar	1.2%	2.5%	4.6%	4.7%
	06:50	JP	Retail Sales MoM	Mar	1.6%	-0.2%	1.5%	-3.0%
	06:50	JP	Industrial Production MoM	Mar P	-3.2%	0.6%	-0.6%	2.9%
	06:50	JP	Industrial Production YoY	Mar P	-6.7%	-6.6%	-3.9%	--
	08:00	NZ	ANZ Business Confidence	Apr	14.9	--	22.9	--
	08:30	AU	Retail Sales MoM	Mar	-0.4%	0.2%	0.3%	0.2%
	08:30	CN	Composite PMI	Apr	51.7	--	52.7	--
	08:30	CN	Manufacturing PMI	Apr	50.4	50.3	50.8	--
	08:30	CN	Non-manufacturing PMI	Apr	51.2	52.2	53	--
	08:45	CN	Caixin China PMI Mfg	Apr	51.4	51	51.1	--
	12:00	JP	Housing Starts YoY	Mar	-12.8%	-7.6%	-8.2%	--
	12:00	JP	Annualized Housing Starts	Mar		0.801m	0.795m	--
	14:00	CH	KOF Leading Indicator	Apr	101.8	102.1	101.5	100.4
	14:55	DE	Unemployment Change (000's)	Apr	10k	7k	4k	--
	14:55	DE	Unemployment Claims Rate SA	Apr	5.9%	5.9%	5.9%	--
	15:00	DE	GDP SA QoQ	1Q P	0.2%	0.1%	-0.3%	-0.5%
	15:00	DE	GDP NSA YoY	1Q P		--	-0.4%	--
	15:00	DE	GDP WDA YoY	1Q P	-0.2%	-0.2%	-0.2%	--
	15:30	GB	Net Consumer Credit	Mar	1.577b	--	1.4b	1.429b
	15:30	GB	Consumer Credit YoY	Mar		--	8.7%	--
	16:00	EZ	CPI Estimate YoY	Apr	2.4%	2.4%	2.4%	--
	16:00	EZ	CPI MoM	Apr P	0.6%	0.6%	0.8%	--
	16:00	EZ	CPI Core YoY	Apr P	2.7%	2.6%	2.9%	--
	16:00	EZ	GDP SA QoQ	1Q A	0.3%	0.1%	0.0%	--
	16:00	EZ	GDP SA YoY	1Q A	0.4%	0.2%	0.1%	--
	18:00	GB	BOE Releases APF quarterly report					
	19:30	CA	GDP YoY	Feb		1.1%	0.9%	--
	19:30	CA	GDP MoM	Feb	0.2%	0.3%	0.6%	0.5%
	19:30	US	Employment Cost Index	1Q	1.2%	1%	0.9%	--
	20:00	US	FHFA House Price Index MoM	Feb	1.2%	0.1%	-0.1%	--
	20:00	US	S&P CoreLogic CS 20-City MoM SA	Feb	0.9%	0.1%	0.14%	-0.1%
	20:00	US	S&P CoreLogic CS US HPI YoY NSA	Feb		--	6.03%	--
	20:00	US	S&P CoreLogic CS 20-City YoY NSA	Feb	7.3%	6.7%	6.59%	--
	21:00	US	Conf. Board Consumer Confidence	Apr	97.0	104.0	104.7	103.1
	21:00	US	Conf. Board Present Situation	Apr		--	151	--
	21:00	US	Conf. Board Expectations	Apr		--	73.8	--
	21:00	US	FOMC Begins Two-Day Meeting					
<b>Wed/01-May-24</b>	05:45	NZ	Unemployment Rate	1Q		4.3%	4%	--
	05:45	NZ	Employment Change QoQ	1Q		0.3%	0.4%	--
	05:45	NZ	Employment Change YoY	1Q		1.6%	2.4%	--
	05:45	NZ	Average Hourly Earnings QoQ	1Q		--	0.5%	--
	All	CN	<b>Bank Holiday (Labor Day)</b>					
	All	HK	<b>Bank Holiday (Labor Day)</b>					

	06:00	AU	Judo Bank Australia PMI Mfg	Apr F	--	49.9	--
	07:30	JP	Jibun Bank Japan PMI Mfg	Apr F	--	49.9	--
	15:30	GB	S&P Global UK Manufacturing PMI	Apr F	--	48.7	--
	All	DE	<b>Bank Holiday (Labor Day)</b>				
	All	CH	<b>Bank Holiday (Labor Day)</b>				
	19:15	US	ADP Employment Change	Apr	185k	184k	--
	20:30	CA	S&P Global Canada Manufacturing PMI	Apr	--	49.8	--
	20:45	US	S&P Global US Manufacturing PMI	Apr F	49.9	49.9	--
	21:00	US	Construction Spending MoM	Mar	0.3%	-0.3%	--
	21:00	US	JOLTS Job Openings	Mar	8725k	8756k	--
	21:00	US	ISM Manufacturing	Apr	50.1	50.3	--
	21:00	US	ISM Prices Paid	Apr	--	55.8	--
	21:00	US	ISM New Orders	Apr	--	51.4	--
	21:00	US	ISM Employment	Apr	--	47.4	--
	21:30	US	DOE U.S. Crude Oil Inventories	26-Apr	--	-6368k	--
	21:30	US	DOE Cushing OK Crude Inventory	26-Apr	--	-659k	--
	21:30	US	DOE U.S. Gasoline Inventories	26-Apr	--	-634k	--
	21:30	US	DOE U.S. Distillate Inventory	26-Apr	--	1614k	--
	21:30	US	DOE U.S. Refinery Utilization	26-Apr	--	0.4%	--
<b>Thu/02-May-24</b>	01:00	US	FOMC Rate Decision (Upper Bound)	1-May	5.50%	5.50%	--
	01:00	US	FOMC Rate Decision (Lower Bound)	1-May	5.25%	5.25%	--
	01:00	US	Interest on Reserve Balances Rate	2-May	--	5.40%	--
	01:00	US	FOMC Ends Two-Day Meeting				
	01:30	US	Fed Chair Powell Holds Post-Meeting Press Conference				
	All	CN	<b>Bank Holiday (Labor Day)</b>				
	06:50	JP	BOJ Minutes of March Meeting				
	08:30	AU	Imports MoM	Mar	--	4.8%	--
	08:30	AU	Trade Balance	Mar	A\$7400m	A\$7280m	--
	08:30	AU	Exports MoM	Mar	--	-2.2%	--
	12:00	JP	Consumer Confidence Index	Apr	39.7	39.5	--
	13:30	CH	CPI YoY	Apr	--	1%	--
	13:30	CH	CPI MoM	Apr	--	0.0%	--
	13:30	CH	CPI EU Harmonized MoM	Apr	--	-0.1%	--
	13:30	CH	CPI EU Harmonized YoY	Apr	--	1.1%	--
	13:30	CH	CPI Core YoY	Apr	--	1%	--
	13:30	CH	Retail Sales Real YoY	Mar	--	-0.2%	--
	14:30	CH	PMI Manufacturing	Apr	--	45.2	--
	14:30	CH	PMI Services	Apr	--	47.6	--
	14:55	DE	HCOB Germany Manufacturing PMI	Apr F	--	42.2	--
	15:00	EZ	HCOB Eurozone Manufacturing PMI	Apr F	--	45.6	--
	15:30	HK	GDP SA QoQ	1Q A	--	0.4%	--
	15:30	HK	GDP YoY	1Q A	--	4.3%	--
	16:00	EZ	OECD Publishes Economic Outlook				
	19:30	US	Trade Balance	Mar	-\$69.0b	-\$68.9b	--
	19:30	US	Nonfarm Productivity	1Q P	1.5%	3.2%	--
	19:30	US	Unit Labor Costs	1Q P	2%	0.4%	--
	19:30	US	Initial Jobless Claims	27-Apr	--	207k	--
	19:30	US	Continuing Claims	20-Apr	--	1781k	--
	21:00	US	Factory Orders	Mar	1.6%	1.4%	--
	21:00	US	Factory Orders Ex Trans	Mar	--	1.1%	--
	21:00	US	Durable Goods Orders	Mar F	--	2.6%	--
	21:00	US	Durables Ex Transportation	Mar F	--	0.2%	--
	21:00	US	Cap Goods Orders Nondef Ex Air	Mar F	--	0.2%	--
	21:00	US	Cap Goods Ship Nondef Ex Air	Mar F	--	0.2%	--
<b>Fri/03-May-24</b>	06:00	AU	Judo Bank Australia PMI Composite	Apr F	--	53.6	--
	06:00	AU	Judo Bank Australia PMI Services	Apr F	--	54.2	--
	All	CN	<b>Bank Holiday (Labor Day)</b>				
	All	JP	<b>Bank Holiday Contitution Day)</b>				
	15:30	HK	Retail Sales Volume YoY	Mar	--	0.5%	--
	15:30	HK	Retail Sales Value YoY	Mar	--	1.9%	--
	15:30	GB	Official Reserves Changes	Apr	--	\$2310m	--
	15:30	GB	S&P Global UK Services PMI	Apr F	--	54.9	--
	15:30	GB	S&P Global UK Composite PMI	Apr F	--	54	--
	16:00	EZ	Unemployment Rate	Mar	--	6.5%	--
	19:30	US	Two-Month Payroll Net Revision	Apr	--	22k	--
	19:30	US	Change in Nonfarm Payrolls	Apr	250k	303k	--
	19:30	US	Change in Private Payrolls	Apr	200k	232k	--
	19:30	US	Change in Manufact. Payrolls	Apr	9k	0k	--
	19:30	US	Unemployment Rate	Apr	3.8%	3.8%	--
	19:30	US	Average Hourly Earnings MoM	Apr	0.3%	0.3%	--
	19:30	US	Average Hourly Earnings YoY	Apr	4%	4.1%	--
	19:30	US	Average Weekly Hours All Employees	Apr	34.4	34.4	--
	19:30	US	Labor Force Participation Rate	Apr	--	62.7%	--

	19:30	US	Underemployment Rate	Apr		--	7.3%	--
	20:30	CA	S&P Global Canada Composite PMI	Apr		--	47	--
	20:30	CA	S&P Global Canada Services PMI	Apr		--	46.4	--
	20:45	US	S&P Global US Services PMI	Apr F		50.9	50.9	--
	20:45	US	S&P Global US Composite PMI	Apr F		--	50.9	--
	21:00	US	ISM Services Index	Apr		52	51.4	--
	21:00	US	ISM Services Prices Paid	Apr		--	53.4	--
	21:00	US	ISM Services Employment	Apr		--	48.5	--
	21:00	US	ISM Services New Orders	Apr		--	54.4	--
<b>Sat/04-May-24</b>	00:00	US	Baker Hughes U.S. Rig Count	3-May		--	--	--
	06:45	US	Fed's Goolsbee Participates in Panel Discussion					



### Dow Jones (DJ – JUN)

Exp. Date: 13 June 2024



DATE	OPEN	HIGH	LOW	RANGE	CLOSE	SETTLE	CHANGE	CHANGE %	VOLUME
30 Apr	38557	38566	37922	644	37980	37980	↓ 588	1.52	--

WEEKLY		APRIL		2024	
HIGH	LOW	HIGH	LOW	HIGH	LOW
38588 (29/Apr)	37922 (30/Apr)	40353 (01/Apr)	37460 (19/Apr)	40353 (01/Apr)	37300 (18/Jan)

### S&P 500 (SP – JUN)

Exp. Date: 13 June 2024



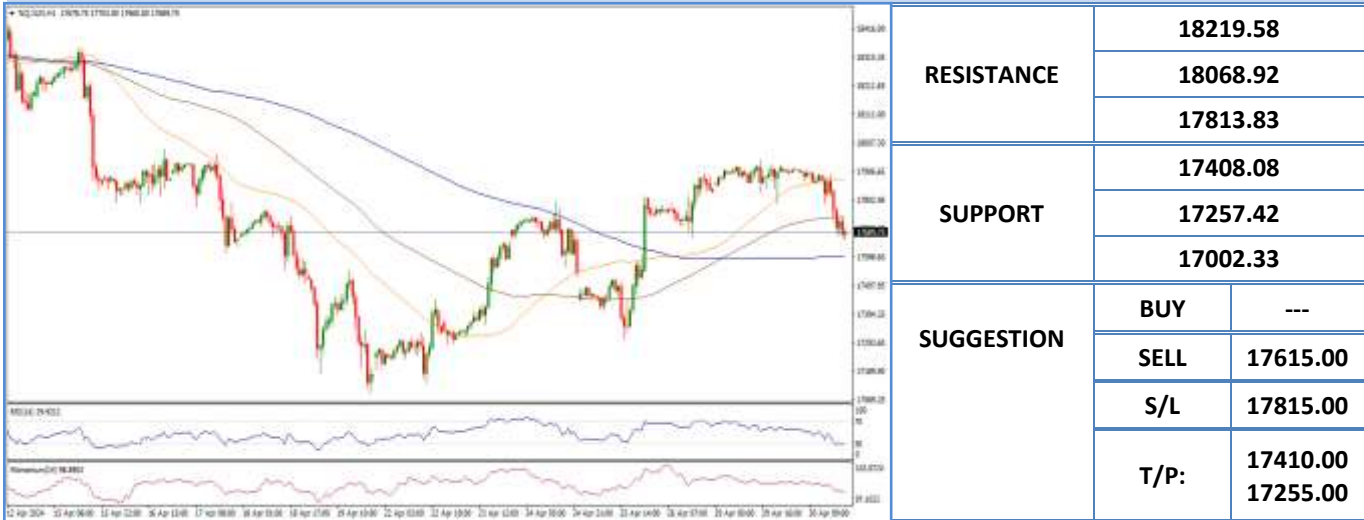
DATE	OPEN	HIGH	LOW	RANGE	CLOSE	SETTLE	CHANGE	CHANGE %	VOLUME
30 Apr	5147.00	5147.25	5054.50	92.75	5063.50	5063.50	↓ 83.75	1.63	--

WEEKLY		APRIL		2024	
HIGH	LOW	HIGH	LOW	HIGH	LOW
5153.50 (29/Apr)	5054.50 (30/Apr)	5332.50 (01/Apr)	4963.00 (19/Apr)	5332.50 (01/Apr)	4701.25 (05/Jan)



### Nasdaq (NQ – JUN)

Exp. Date: 13 June 2024



DATE	OPEN	HIGH	LOW	RANGE	CLOSE	SETTLE	CHANGE	CHANGE %	VOLUME
30 Apr	17914.50	17918.25	17512.50	405.75	17558.75	17558.75	↓ 358.75	2.00	--

WEEKLY		APRIL		2024	
HIGH	LOW	HIGH	LOW	HIGH	LOW
17947.00 (29/Apr)	17512.50 (30/Apr)	18610.00 (01/Apr)	17113.00 (19/Apr)	18706.25 (21/Mar)	16335.00 (05/Jan)

### Nikkei (NIK– JUN)

Exp. Date: 06 June 2024



DATE	OPEN	HIGH	LOW	RANGE	CLOSE	SETTLE	CHANGE	CHANGE%	VOLUME
30 Apr	38280	38625	38110	515	38125	38125	↓ 200	0.52	--

WEEKLY		APRIL		2024	
HIGH	LOW	HIGH	LOW	HIGH	LOW
38740 (29/Apr)	38110 (30/Apr)	40755 (01/Apr)	36710 (19/Apr)	40915 (21/Mar)	32665 (04/Jan)

### Hang Seng (HAS – MAY)

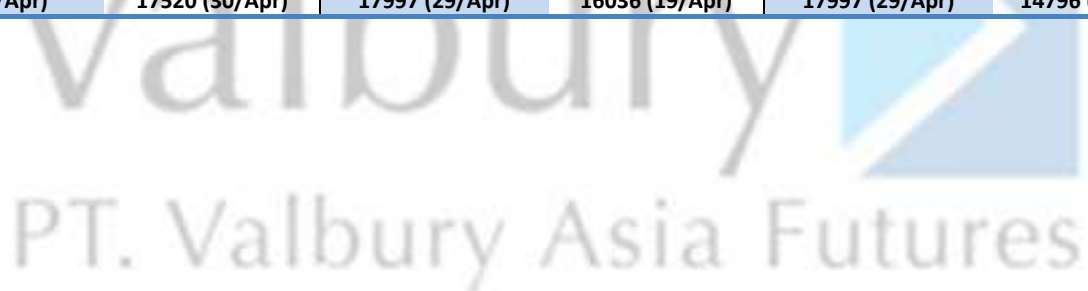
Exp. Date: 30 May 2024



RESISTANCE	18067	
	17956	
	17741	
SUPPORT	17415	
	17304	
	17089	
SUGGESTION	BUY	---
	SELL	17580
	S/L	17740
	T/P:	17415 17305

DATE	OPEN	HIGH	LOW	RANGE	CLOSE	SETTLE	CHANGE	CHANGE %	VOLUME
30 Apr	17750	17846	17520	326	17526	17526	↓ 179	1.01	--

WEEKLY		APRIL		2024	
HIGH	LOW	HIGH	LOW	HIGH	LOW
17997 (29/Apr)	17520 (30/Apr)	17997 (29/Apr)	16036 (19/Apr)	17997 (29/Apr)	14796 (22/Jan)



## Disclaimer

All contents of this report have been prepared by the Research Dept. of Valbury Asia Futures and are provided solely for informational purpose. We have taken reasonable measures to ensure the accuracy of the report, however, do not guarantee its accuracy and will not accept liability for any consequential loss or damage which may arise directly or indirectly from any use of the report.

Published by RESEARCH DEPARTMENT – PT VALBURY ASIA FUTURES  
Menara Karya 9th Floor, Jl. HR Rasuna Said Blok X-5 Kav. 1-2 Jakarta 12950 Indonesia  
Phone : +6221-25533777, Email: [research@valbury.com](mailto:research@valbury.com)

valbury   
PT. Valbury Asia Futures