








Daily Outlook

GLOBAL MARKETS & ECONOMIES | WEEKLY ECONOMIC INDICATORS | CURRENCIES | PRECIOUS METAL | OIL |
**“USD Menguat Jelang Data GDP AS, Yen Melemah Di Atas Level 155 Waspada
 Potensi Intervensi”**

Counter	News	Trend	Support	Resistance
 CLc1 (WTI)	OIL – Harga minyak turun pada hari Rabu karena kekhawatiran atas konflik di Timur Tengah mereda dan aktivitas bisnis di AS melambat meskipun penurunan persediaan minyak mentah AS membatasi kerugian tersebut. Resistance 83.52, support 82.26	↓	82.26	83.52
 XAUUSD	XAUUSD – Harga emas stabil pada hari Rabu karena premi risiko atas ketegangan di Timur Tengah mereda sementara investor bersiap-siap untuk data ekonomi AS yang akan dirilis pada akhir pekan ini yang dapat memberikan petunjuk mengenai jalur suku bunga Federal Reserve. Resistance 2331.46, support 2305.91	↓	2305.91	2331.46
 EURUSD	EURUSD – Euro ditutup menguat pada perdagangan hari Rabu, menyusul reli yang terjadi pada hari Selasa menyusul data yang menunjukkan aktivitas bisnis di zona euro berkembang pada laju tercepat dalam hampir satu tahun. Resistance utama di 1.0716, support di 1.0679	↓	1.0679	1.0716
 USDJPY	USDJPY – Yen melemah terhadap USD pada hari Rabu ke level terendah sejak pertengahan tahun 1990 di atas area kunci 155, dengan pasar yang waspada terhadap tanda-tanda intervensi dari pihak berwenang Jepang untuk menopang mata uang mereka sementara Menteri Keuangan Jepang Shunichi Suzuki dan para pembuat kebijakan lainnya mengatakan bahwa mereka mengamati pergerakan mata uang dengan seksama dan akan merespons sesuai kebutuhan. Resistance 155.47, support 154.82	↑	154.82	155.47
 GBPUSD	GBPUSD – Pound Sterling, melanjutkan penguatannya pada hari Selasa karena data yang menunjukkan bisnis Inggris mencatat pertumbuhan aktivitas tercepat mereka dalam hampir satu tahun. Pound juga mendapatkan sokongan oleh komentar pada hari Selasa dari kepala ekonom Bank of England Huw Pill yang mengatakan penurunan suku bunga masih jauh. Resistance utama 1.2497, support 1.2402	↑	1.2402	1.2497
 USDCHF	USDCHF – Harga naik setelah pelemahan Yen Jepang terhadap USD pada hari Rabu yang membawa ke level terendah sejak pertengahan tahun 1990 di level area utama 155, Pasar waspada terhadap tanda-tanda intervensi dari otoritas Jepang untuk menopang mata uangnya. Resistance utama 0.9177, support 0.9095	↑	0.9095	0.9177
 AUDUSD	AUDUSD – Harga naik setelah data harga konsumen Australia yang lebih tinggi dari perkiraan, menyebabkan pasar mengabaikan harapan untuk penurunan suku bunga dari Reserve Bank of Australia dalam waktu dekat namun USD menguat didukung oleh ketahanan ekonomi AS dan imbal hasil Treasury AS yang lebih tinggi di tengah spekulasi hawkish terhadap Federal Reserve. Resistance 0.6522, support 0.6475	↓	0.6475	0.6522

ECONOMIC INDICATORS

DATE	WIB	CT Y	INDICATORS	PER	ACTUAL	FORECAST	PREV.	REV.
Mon/22-Apr-24	16:05	GB	BOE's Benjamin speaks					
	19:30	CA	Industrial Product Price MoM	Mar	0.8%	0.8%	0.7%	1.1%
	21:00	EZ	Consumer Confidence	Apr P	-14.7	-14	-14.9	--
	22:30	EZ	ECB's Villeroy speaks in Paris					
Tue/23-Apr-24	06:00	AU	Judo Bank Australia PMI Composite	Apr P	53.6	--	53.3	--
	06:00	AU	Judo Bank Australia PMI Mfg	Apr P	49.9	--	47.3	--
	06:00	AU	Judo Bank Australia PMI Services	Apr P	54.2	--	54.4	--
	07:30	JP	Jibun Bank Japan PMI Composite	Apr P	52.6	--	51.7	--
	07:30	JP	Jibun Bank Japan PMI Mfg	Apr P	49.9	48	48.2	--
	07:30	JP	Jibun Bank Japan PMI Services	Apr P	54.6	--	54.1	--
	14:30	DE	HCOB Germany Manufacturing PMI	Apr P	42.2	42.8	41.9	--
	14:30	DE	HCOB Germany Services PMI	Apr P	53.3	50.6	50.1	--
	14:30	DE	HCOB Germany Composite PMI	Apr P	50.5	48.6	47.7	--
	15:00	EZ	HCOB Eurozone Manufacturing PMI	Apr P	45.6	46.5	46.1	--
	15:00	EZ	HCOB Eurozone Services PMI	Apr P	52.9	51.8	51.5	--
	15:00	EZ	HCOB Eurozone Composite PMI	Apr P	51.4	50.8	50.3	--
	15:00	GB	BOE's Haskel speaks					
	15:30	HK	CPI Composite YoY	Mar	2%	--	2.1%	--
	15:30	GB	S&P Global UK Manufacturing PMI	Apr P	48.7	50.3	50.3	--
	15:30	GB	S&P Global UK Services PMI	Apr P	54.9	53	53.1	--
	15:30	GB	S&P Global UK Composite PMI	Apr P	54	--	52.8	--
	18:15	GB	BOE's Huw Pill speaks					
	19:30	EZ	ECB's Nagel Speaks in Berlin					
	19:30	US	Philadelphia Fed Non-Manufacturing Activity	Apr		--	-18.3	--
	20:45	US	S&P Global US Manufacturing PMI	Apr P	49.9	52	51.9	--
	20:45	US	S&P Global US Services PMI	Apr P	50.9	52	51.7	--
	20:45	US	S&P Global US Composite PMI	Apr P	50.9	--	52.1	--
	21:00	US	Revisions: Retail Sales					
21:00	US	New Home Sales	Mar	693k	668k	637k	--	
21:00	US	New Home Sales MoM	Mar	8.8%	1.2%	-5.1%	--	
Wed/24-Apr-24	05:45	NZ	Exports NZD	Mar	NZ\$6.5b	--	NZ\$5.89b	NZ\$5.79b
	05:45	NZ	Trade Balance NZD	Mar	NZ\$588m	NZ\$-505m	NZ\$-218m	NZ\$-315m
	05:45	NZ	Trade Balance 12 Mth YTD NZD	Mar	NZ\$-9870m	--	NZ\$-11991m	NZ\$-12060m
	05:45	NZ	Imports NZD	Mar	NZ\$5.91b	--	NZ\$6.11b	NZ\$6.1b
	06:50	JP	PPI Services YoY	Mar	2.3%	2.1%	2.1%	2.2%
	08:30	AU	CPI YoY	Mar	3.6%	3.4%	4.1%	--
	08:30	AU	CPI Weighted Median YoY	1Q	4.4%	4.1%	4.4%	--
	08:30	AU	CPI Weighted Median QoQ	1Q	1.1%	0.9%	0.9%	--
	08:30	AU	CPI Trimmed Mean QoQ	1Q	1%	0.8%	0.8%	--
	08:30	AU	CPI QoQ	1Q	1%	0.8%	0.6%	--
	08:30	AU	CPI Trimmed Mean YoY	1Q	4%	3.8%	4.2%	--
	08:30	AU	CPI YoY	1Q	3.6%	3.4%	4.1%	--
	14:00	EZ	Bundesbank Chief Nagel Speaks on Central Bank Money					
	14:35	EZ	ECB's Cipollone Speaks in Frankfurt					
	15:00	DE	IFO Business Climate	Apr	89.4	88.9	87.9	--
	15:00	DE	IFO Current Assessment	Apr	88.9	88.7	88.1	--
	15:00	DE	IFO Expectations	Apr	89.9	88.9	87.7	--
	15:00	CH	UBS Survey Expectations	Apr	17.6	--	11.5	--
	19:30	CA	Retail Sales MoM	Feb	-0.1%	0.1%	-0.3%	--
	19:30	CA	Retail Sales Ex Auto MoM	Feb	-0.3%	0.0%	0.5%	0.4%
	19:30	US	Durable Goods Orders	Mar P	2.6%	2.5%	1.3%	0.7%
	19:30	US	Durables Ex Transportation	Mar P	0.2%	0.3%	0.3%	0.1%
	19:30	US	Cap Goods Orders Nondef Ex Air	Mar P	0.2%	0.2%	0.4%	--
	19:30	US	Cap Goods Ship Nondef Ex Air	Mar P	--	--	-0.6%	--
21:30	US	DOE U.S. Crude Oil Inventories	19-Apr	-6368k	1600k	2735k	--	
21:30	US	DOE Cushing OK Crude Inventory	19-Apr	-659k	--	33k	--	
21:30	US	DOE U.S. Gasoline Inventories	19-Apr	-634k	-1400k	-1154k	--	
21:30	US	DOE U.S. Distillate Inventory	19-Apr	1614k	-900k	-2760k	--	
21:30	US	DOE U.S. Refinery Utilization	19-Apr	0.4%	0.6%	-0.2%	--	
Thu/25-Apr-24	00:30	CA	Bank of Canada Releases Summary of Deliberations					
	ALL	NZ	Bank Holiday (ANZAC Day)					
	ALL	AU	Bank Holiday (ANZAC Day)					
	12:00	JP	Leading Index Cl	Feb F		--	111.8	--
12:00	JP	Coincident Index	Feb F		--	110.9	--	

	13:00	DE	GfK Consumer Confidence	May		-25.5	-27.4	--
	14:00	EZ	ECB's Schnabel Speaks in Frankfurt					
	15:00	EZ	ECB Publishes Economic Bulletin					
	15:20	EZ	ECB's Vujcic Speaks					
	15:30	HK	Exports YoY	Mar		--	-0.8%	--
	15:30	HK	Imports YoY	Mar		--	-1.8%	--
	15:30	HK	Trade Balance HKD	Mar		--	-41.7b	--
	18:00	CA	CFIB Business Barometer	Apr		--	52.7	--
	19:30	CA	Payroll Employment Change - SEPH	Feb		--	39.8k	--
	19:30	US	GDP Annualized QoQ	1Q A		2.3%	3.4%	--
	19:30	US	Personal Consumption	1Q A		--	3.3%	--
	19:30	US	GDP Price Index	1Q A		3.0%	1.6%	--
	19:30	US	Core PCE Price Index QoQ	1Q A		--	2.0%	--
	19:30	US	Advance Goods Trade Balance	Mar		-\$90.4b	-\$91.8b	-\$90.3b
	19:30	US	Retail Inventories MoM	Mar		--	0.5%	0.6%
	19:30	US	Wholesale Inventories MoM	Mar P		0.2%	0.5%	--
	19:30	US	Initial Jobless Claims	20-Apr		--	212k	--
	19:30	US	Continuing Claims	13-Apr		--	1812k	--
	21:00	US	Pending Home Sales MoM	Mar		1.0%	1.6%	--
	21:00	US	Pending Home Sales NSA YoY	Mar		--	-2.2%	--
	22:15	EZ	Bundesbank Chief Nagel Speaks About Climate Change					
Fri/26-Apr-24	N/A	JP	BOJ Target Rate (Upper Bound)	26-Apr		--	0.1%	--
	N/A	JP	BOJ Target Rate (Lower Bound)	26-Apr		--	0.0%	--
	N/A	JP	BOJ GDP Current Forecast	2Q		--	1.2%	--
	N/A	JP	BOJ GDP Current Forecast +1	2Q		--	1.0%	--
	N/A	JP	BOJ GDP Current Forecast +2	2Q		--	--	--
	N/A	JP	BOJ CPI Current Forecast	2Q		--	2.4%	--
	N/A	JP	BOJ CPI Current Forecast +1	2Q		--	1.8%	--
	N/A	JP	BOJ CPI Current Forecast +2	2Q		--	--	--
	N/A	JP	BOJ Core CPI Ex-Energy Current	2Q		--	--	--
	N/A	JP	BOJ Core CPI Ex-Energy Current Forecast +1	2Q		--	--	--
	N/A	JP	BOJ Core CPI Ex-Energy Current Forecast +2	2Q		--	--	--
	00:30	EZ	ECB's Panetta Speaks in Frankfurt					
	05:00	NZ	ANZ Consumer Confidence MoM	Apr		--	-8.6%	--
	05:00	NZ	ANZ Consumer Confidence Index	Apr		--	86.4	--
	06:01	GB	GfK Consumer Confidence	Apr		--	-21	--
	06:30	JP	Tokyo CPI YoY	Apr		2.5%	2.6%	--
	06:30	JP	Tokyo CPI Ex-Fresh Food YoY	Apr		2.2%	2.4%	--
	06:30	JP	Tokyo CPI Ex-Fresh Food, Energy YoY	Apr		2.7%	2.9%	--
	08:30	AU	PPI YoY	1Q		--	4.1%	--
	08:30	AU	PPI QoQ	1Q		--	0.9%	--
	08:30	AU	Import Price Index QoQ	1Q		0.1%	1.1%	--
	08:30	AU	Export Price Index QoQ	1Q		-0.6%	5.6%	--
	15:00	EZ	ECB 1 Year CPI Expectations	Mar		--	3.1%	--
	15:00	EZ	ECB 3 Year CPI Expectations	Mar		--	2.5%	--
	16:00	EZ	ECB's Centeno Participates in Panel in Frankfurt					
	19:30	US	Personal Income	Mar		0.5%	0.3%	--
	19:30	US	Personal Spending	Mar		0.6%	0.8%	--
	19:30	US	Real Personal Spending	Mar		--	0.4%	--
	19:30	US	PCE Deflator MoM	Mar		0.3%	0.3%	--
	19:30	US	PCE Deflator YoY	Mar		2.6%	2.5%	--
	19:30	US	PCE Core Deflator MoM	Mar		0.3%	0.3%	--
	19:30	US	PCE Core Deflator YoY	Mar		2.7%	2.8%	--
	21:00	US	U. of Mich. Sentiment	Apr F		77.9	77.9	--
	21:00	US	U. of Mich. Current Conditions	Apr F		--	79.3	--
	21:00	US	U. of Mich. Expectations	Apr F		--	77	--
	21:00	US	U. of Mich. 1 Yr Inflation	Apr F		--	3.1%	--
	21:00	US	U. of Mich. 5-10 Yr Inflation	Apr F		--	3.0%	--
Sat/27-Apr-24	00:00	US	Baker Hughes U.S. Rig Count	26-Apr		--	--	--

OIL WTI – CL-JUN/USD (Exp. 17 May 2024)



RESISTANCE	84.78	
	84.24	
	83.52	
SUPPORT	82.26	
	81.72	
	81.00	
SUGGESTION	BUY	---
	SELL	82.90
	S/L	83.55
	T/P:	82.25 81.70

DATE	OPEN	HIGH	LOW	RANGE	CLOSE	CHANGE	PREVIOUS
Apr 24	83.39	83.69	82.43	1.26	82.81	↓ 0.56	83.37

WEEKLY		APRIL		2024	
HIGH	LOW	HIGH	LOW	HIGH	LOW
83.69 (24/Apr)	80.71 (22/Apr)	87.63 (12/Apr)	80.71 (22/Apr)	87.63 (12/Apr)	69.30 (03/Jan)

GOLD (XAU/USD)



RESISTANCE	2357.01	
	2347.12	
	2331.46	
SUPPORT	2305.91	
	2296.02	
	2280.36	
SUGGESTION	BUY	---
	SELL	2318.00
	S/L	2331.00
	T/P:	2305.00 2296.00

DATE	OPEN	HIGH	LOW	RANGE	CLOSE	CHANGE	PREVIOUS
Apr 24	2321.74	2337.22	2311.67	25.55	2315.81	↓ 6.20	2322.01

WEEKLY		APRIL		2024	
HIGH	LOW	HIGH	LOW	HIGH	LOW
2387.70 (22/Apr)	2291.28 (23/Apr)	2431.35 (12/Apr)	2228.35 (01/Apr)	2431.35 (12/Apr)	1989.97 (13/Feb)

SILVER – XAG/USD



RESISTANCE	27.854	
	27.661	
	27.402	
SUPPORT	26.950	
	26.757	
	26.498	
SUGGESTION	BUY	---
	SELL	27.20
	S/L	27.40
	T/P:	26.95 26.75

DATE	OPEN	HIGH	LOW	RANGE	CLOSE	CHANGE	PREVIOUS
Apr 24	27.275	27.469	27.017	0.452	27.142	↓ 0.139	27.281

WEEKLY		APRIL		2024	
HIGH	LOW	HIGH	LOW	HIGH	LOW
28.586 (22/Apr)	26.647 (23/Apr)	29.773 (12/Apr)	24.719 (01/Apr)	29.773 (12/Apr)	21.903 (22/Jan)

EUR/USD

Interest Rate: 4.50% (EU) / 5.25% - 5.50% (US)



RESISTANCE	1.07522	
	1.07328	
	1.07160	
SUPPORT	1.06798	
	1.06604	
	1.06436	
SUGGESTION	BUY	---
	SELL	1.0695
	S/L	1.0720
	T/P:	1.0655 1.0640

DATE	OPEN	HIGH	LOW	RANGE	CLOSE	CHANGE	PREVIOUS
Apr 24	1.07020	1.07134	1.06772	36,2	1.06992	↓ 2,9	1.07021

WEEKLY		APRIL		2024	
HIGH	LOW	HIGH	LOW	LOW	HIGH
1.07134 (24/Apr)	1.06232 (22/Apr)	1.08842 (09/Apr)	1.06003 (16/Apr)	1.10438 (02/Jan)	1.06003 (16/Apr)

All price & chart based on Valbury MT4 Platform

USDJPY

Interest Rate: 5.25% - 5.50% (US) / 0.00% (JP)



RESISTANCE	156.118	
	155.741	
	155.473	
SUPPORT	154.828	
	154.451	
	154.183	
SUGGESTION	BUY	155.15
	SELL	---
	S/L	154.80
	T/P:	155.45 155.75

DATE	OPEN	HIGH	LOW	RANGE	CLOSE	CHANGE	PREVIOUS
Apr 24	154.755	155.365	154.720	64,5	155.204	↑ 44,8	154.756

WEEKLY		APRIL		2024	
HIGH	LOW	HIGH	LOW	HIGH	LOW
155.365 (24/Apr)	154.532 (22/Apr)	155.365 (24/Apr)	150.802 (05/Apr)	155.365 (24/Apr)	140.806 (02/Jan)

GBP/USD

Interest Rate: 5.25% (GB) / 5.25% - 5.50% (US)



RESISTANCE	1.25263	
	1.24976	
	1.24789	
SUPPORT	1.24315	
	1.24028	
	1.23841	
SUGGESTION	BUY	1.2450
	SELL	---
	S/L	1.2415
	T/P:	1.2500 1.2510

DATE	OPEN	HIGH	LOW	RANGE	CLOSE	CHANGE	PREVIOUS
Apr 24	1.24472	1.24690	1.24216	47,4	1.24601	↑ 13,0	1.24471

WEEKLY		APRIL		2024	
HIGH	LOW	HIGH	LOW	HIGH	LOW
1.24690 (24/Apr)	1.22985 (22/Apr)	1.27083 (09/Apr)	1.22985 (22/Apr)	1.28926 (08/Mar)	1.22985 (22/Apr)

All price & chart based on Valbury MT4 Platform

USD/CHF

Interest Rate: 5.25% - 5.50% (US) / 1.50% (CH)



RESISTANCE	0.92030	
	0.91775	
	0.91621	
SUPPORT	0.91212	
	0.90957	
	0.90803	
SUGGESTION	BUY	0.9140
	SELL	---
	S/L	0.9115
	T/P:	0.9185 0.9200

DATE	OPEN	HIGH	LOW	RANGE	CLOSE	CHANGE	PREVIOUS
Apr 24	0.91114	0.91521	0.91112	40,9	0.91466	↑ 35,4	0.91112

WEEKLY		APRIL		2024	
HIGH	LOW	HIGH	LOW	HIGH	LOW
0.91521 (24/Apr)	0.90857 (23/Apr)	0.91521 (24/Apr)	0.89968 (05/Apr)	0.91521 (24/Apr)	0.84012 (02/Jan)

AUD/USD

Interest Rate: 4.35% (AU) / 5.25% - 5.50% (US)



RESISTANCE	0.65687	
	0.65487	
	0.65223	
SUPPORT	0.64759	
	0.64559	
	0.64295	
SUGGESTION	BUY	---
	SELL	0.6500
	S/L	0.6520
	T/P:	0.6475 0.6455

DATE	OPEN	HIGH	LOW	RANGE	CLOSE	CHANGE	PREVIOUS
Apr 24	0.64875	0.65287	0.64823	46,4	0.64959	↑ 8,5	0.64874

WEEKLY		APRIL		2024	
HIGH	LOW	HIGH	LOW	HIGH	LOW
0.65287 (24/Apr)	0.64204 (22/Apr)	0.66442 (09/Apr)	0.63612 (19/Apr)	0.68381 (02/Jan)	0.63612 (19/Apr)

All price & chart based on Valbury MT4 Platform

NZD/USD

Interest Rate: 5.50% (NZ) / 5.25% - 5.50% (US)



DATE	OPEN	HIGH	LOW	RANGE	CLOSE	CHANGE	PREVIOUS
Apr 24	0.59322	0.59512	0.59195	31,7	0.59338	↑ 1,7	0.59321

WEEKLY		APRIL		2024	
HIGH	LOW	HIGH	LOW	HIGH	LOW
0.59512 (24/Apr)	0.58917 (22/Apr)	0.60819 (10/Apr)	0.58512 (19/Apr)	0.63216 (02/Jan)	0.58512 (19/Apr)

USD/CAD

Interest Rate: 5.25% - 5.50% (US) / 5.00% (CA)



DATE	OPEN	HIGH	LOW	RANGE	CLOSE	CHANGE	PREVIOUS
Apr 24	1.36600	1.37278	1.36536	74,2	1.37030	↑ 42,7	1.36603

WEEKLY		APRIL		2024	
HIGH	LOW	HIGH	LOW	HIGH	LOW
1.37489 (22/Apr)	1.36536 (24/Apr)	1.38450 (16/Apr)	1.34769 (04/Apr)	1.38450 (16/Apr)	1.32277 (02/Jan)

All price & chart based on Valbury MT4 Platform

EURJPY

Interest Rate: 4.50% (EU) / 0.00% (JP)

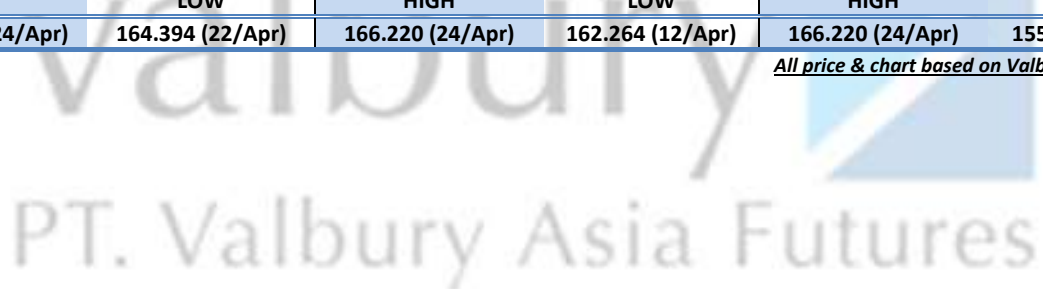


RESISTANCE	167.262	
	166.741	
	166.413	
SUPPORT	165.564	
	165.043	
	164.715	
SUGGESTION	BUY	165.95
	SELL	---
	S/L	165.55
	T/P:	166.40 166.75

DATE	OPEN	HIGH	LOW	RANGE	CLOSE	CHANGE	PREVIOUS
Apr 24	165.665	166.220	165.371	84,9	166.085	↑ 42,0	165.665

WEEKLY		APRIL		2024	
HIGH	LOW	HIGH	LOW	HIGH	LOW
166.220 (24/Apr)	164.394 (22/Apr)	166.220 (24/Apr)	162.264 (12/Apr)	166.220 (24/Apr)	155.060 (02/Jan)

All price & chart based on Valbury MT4 Platform



Disclaimer

All contents of this report have been prepared by the Research Dept. of Valbury Asia Futures and are provided solely for informational purpose. We have taken reasonable measures to ensure the accuracy of the report, however, do not guarantee its accuracy and will not accept liability for any consequential loss or damage which may arise directly or indirectly from any use of the report.

Published by RESEARCH DEPARTMENT – PT VALBURY ASIA FUTURES
Menara Karya 9th Floor, Jl. HR Rasuna Said Blok X-5 Kav. 1-2 Jakarta 12950 Indonesia
Phone : +6221-25533777, Email: research@valbury.com