

Daily Outlook

GLOBAL STOCK INDEX

<p><u>DJIA</u></p>	<p>U.S. stocks rose in a broad-based rally on Friday as stronger-than-expected job growth in April coupled with muted wage gains left investors upbeat about the outlook for the economy and interest rates. The Nasdaq registered a record high close, while the S&P 500 ended just shy of a record high finish. The Labor Department said employers added 263,000 jobs in April, which blew past expectations, and the unemployment rate dropped to 3.6 percent, the lowest level since December 1969. Average hourly earnings came in just shy of expectations, indicating muted inflationary pressure. The data supports the Federal Reserve's patient stance toward raising interest rates, which is a positive for stocks.</p> <p>Boosting the S&P 500 and the Nasdaq, Amazon.com Inc rose 3.2%, after CNBC reported that Warren Buffett's Berkshire Hathaway Inc has bought shares of the internet retailing giant for the first time. The consumer discretionary sector rose 1.5%, leading a rally among the 11 major S&P sectors. The Dow Jones Industrial Average rose 197.16 points, or 0.75%, to 26,504.95, the S&P 500 gained 28.12 points, or 0.96%, to 2,945.64, and the Nasdaq Composite added 127.22 points, or 1.58%, to 8,164.00. For the week, the S&P 500 and Nasdaq were up 0.2% while the Dow slipped 0.2%.</p> <p>With nearly 400 S&P 500 companies having reported quarterly results so far, three-quarters have topped profit estimates, according to Refinitiv data.</p> <p>The upbeat reports have turned around the S&P 500 earnings estimate for the first quarter to a rise of almost 1% compared with the 2% decline projected at the start of April.</p>
<p><u>Nikkei</u></p>	<p>Japan's financial markets are closed from Saturday, April 27 to Monday, May 6 for the Golden Week holidays.</p> <p>Reuters will resume coverage of Japanese stock markets and government bonds when markets reopen on May 7.</p>
<p><u>Kospi</u></p>	<p>South Korean shares closed lower on Friday as the U.S. Federal Reserve's comments dashed hopes of a rate cut in the near term, and as investors awaited the release of U.S. employment data for cues. The won hit a more than two-year intraday low, while benchmark bond yields rose.</p> <p>The United States is expected to have created 185,000 net new jobs last month, while the unemployment rate will likely remain steady at 3.8 percent, according to a Reuters survey of economists.</p> <p>South Korea's main KOSPI stock index fell 16.43 points, or 0.74 percent, to 2,196.32. For the week, the benchmark index gained 0.78 percent, snapping two straight weekly losses.</p> <p>Foreigners were net buyers of 151.6 billion won worth of shares on the main board, extending their purchase to a fifth session.</p> <p>The won was quoted at 1,170.0 per dollar on the onshore settlement platform, 0.37 percent lower than its previous close of 1,165.7, after hitting its weakest intraday level since January 2017. The currency fell 0.77 percent on a weekly basis, after the previous week's 2.1 percent drop.</p> <p>The won was seen down due to Federal Reserve Chairman Jerome Powell's hawkish comments and a weak Australian dollar on signs of economic slowdown, said Kiwoom Securities analyst Seo Sang-young.</p>
<p><u>Hang Seng & Shanghai</u></p>	<p>➤ Hong Kong shares ended higher on Friday, after heavyweight HSBC Holdings Plc's earnings beat estimates, lifting sentiment on an otherwise quiet day as mainland Chinese markets remained closed for a holiday.</p> <p>At the close of trade, the Hang Seng index was up 0.5 percent at 30,081.55. The benchmark climbed 1.6 percent week-on-week.</p> <p>The Hang Seng China Enterprises index rose 0.2 percent. The index gained 0.6 percent this week.</p> <p>The sub-index of the Hang Seng index tracking the financial sector ended 0.8 percent higher, the property sector sub-index rose 0.5 percent, while energy shares dipped 0.7 percent and the IT sector lost 0.3 percent.</p> <p>HSBC beat forecast with a 31 percent rise in first quarter profit, bolstered by a surge in income from its core Asian business and lower costs that outweighed a poor performance from investment banking. Hong Kong-listed shares of the bank climbed as much as 2.9 pct, a seven-month high, after the results. The stock was the second-most traded in early afternoon trade.</p> <p>Shares of Hang Seng Bank Ltd, part of the HSBC group, rose as much as 2.6 pct to HK\$209.80, their highest since Oct. 10, after the lender declared higher interim dividend.</p> <p>China financial markets are shut for Labour Day holiday. Trading will resume on Monday, May 6.</p> <p>To mark the ascension of Japan's new emperor, the government had declared an unprecedented 10-day holiday from late April to early May. Japan markets will be back in action on May 7.</p>

➤ **China financial markets are shut for Labour Day holiday. Trading will resume on Monday, May 6.**

Closing Prices – 03 May 2019

	CLOSE	CHANGE		CLOSE	CHANGE
.DJI	26504.74	↑ 196.95/0.75%	.N225	HOLIDAY	↓ 48.85/0.22%
/.SPX	2945.62	↑ 28.10/0.96%	.KS200	283.67	↓ 2.45/0.86%
/.IXIC	8163.996	↑ 127.224/1.58%	.HSI	30081.55	↑ 137.37/0.46%
JPY=	111.09	↓ 0.41/0.37%	/.SSEC	HOLIDAY	↑ 15.84040/0.52%
KRW=	1163.68	↓ 2.48/0.21%	/CLc1 (Oil)	61.86	↑ 0.32/0.52%

ECONOMIC INDICATORS

DATE	WIB	CTY	INDICATORS	PER	ACTUAL	FORECAST	PREV.	REV.
28-Apr - 03-May	N/A	GB	Nationwide House PX MoM	Apr		0.1%	0.2%	
28-Apr - 03-May	N/A	GB	Nationwide House Px NSA YoY	Apr		0.7%	0.7%	
Mon/29-Apr-19	All	JP	Bank Holiday (Showa Day)					
	15:10	GB	Bank of England Governor Carney Speaks in London					
	15:30	HK	Exports YoY	Mar	-1.2%	-2.6%	-6.9%	
	15:30	HK	Imports YoY	Mar	-0.1%	-5.0%	-3.8%	
	15:30	HK	Trade Balance HKD	Mar	H\$-59.2b	H\$-54.0b	H\$-48.8b	
	16:00	EZ	Business Climate Indicator	Apr	0.42	0.49	0.53	0.54
	16:00	EZ	Consumer Confidence	Apr F	-7.9	-7.9	-7.9	-7.2
	16:00	EZ	Economic Confidence	Apr	104.0	105.0	105.5	105.6
	16:00	EZ	Industrial Confidence	Apr	-4.1	-2.0	-1.7	-1.6
	16:00	EZ	Services Confidence	Apr	11.5	11.1	11.3	11.5
29-Apr - 03-May	N/A	DE	Retail Sales MoM	Mar		-0.2%	0.9%	
29-Apr - 03-May	N/A	DE	Retail Sales YoY	Mar		3.0%	4.7%	
	19:30	US	BEA Releases March income/spending (includes Feb. outlays)					
	19:30	US	PCE Core Deflator MoM	Mar	0.0%	0.1%	0.1%	
	19:30	US	PCE Core Deflator YoY	Mar	1.6%	1.7%	1.7%	
	19:30	US	PCE Deflator MoM	Mar	0.2%	0.3%	0.1%	
	19:30	US	PCE Deflator YoY	Mar	1.5%	1.6%	1.3%	
	19:30	US	Personal Income	Mar	0.1%	0.4%	0.2%	
	19:30	US	Personal Spending	Mar	0.9%	0.7%	0.1%	
	19:30	US	Real Personal Spending	Mar	0.7%	0.5%	0.0%	
	21:30	US	Dallas Fed Manf. Activity	Apr	2.0	10.0	8.3	
	21:30	US	Revisions: Dallas Fed Manufacturing					
Tue/30-Apr-19	04:00	KR	Business Survey Manufacturing	May	75	71	76	73
	04:00	KR	Business Survey Non-Manufacturing	May		--	76	
	All	JP	Bank Holiday (Abdication Day)					
	06:00	KR	Cyclical Leading Index Change	Mar		--	-0.3	
	06:00	KR	Industrial Production SA MoM	Mar	1.4%	1.0%	-2.6%	
	06:00	KR	Industrial Production YoY	Mar	-2.8%	-0.8%	-2.7%	
	06:01	GB	GfK Consumer Confidence	Apr	-13	-13	-13	
	06:01	GB	Lloyds Business Barometer	Apr	14	--	10	
	08:00	NZ	ANZ Activity Outlook	Apr	7.1	--	6.3	
	08:00	NZ	ANZ Business Confidence	Apr	-37.5	--	-38	
	08:00	CN	Composite PMI	Apr	53.4	--	54	
	08:00	CN	Manufacturing PMI	Apr	50.1	50.5	50.5	
	08:00	CN	Non-manufacturing PMI	Apr	54.3	54.9	54.8	
	08:30	AU	Private Sector Credit MoM	Mar	0.3%	0.3%	0.3%	
	08:30	AU	Private Sector Credit YoY	Mar	3.9%	4.0%	4.2%	4.1%
	13:00	DE	GfK Consumer Confidence	May	10.4	10.3	10.4	
	14:00	CH	KOF Leading Indicator	Apr	96.2	97.0	97.4	
	14:40	GB	BOE Deputy Governor Ramsden Speaks in London					
	14:55	DE	Unemployment Change (000's)	Apr	-12k	-5k	-7k	
	14:55	DE	Unemployment Claims Rate SA	Apr	4.9%	4.9%	4.9%	

	16:00	EZ	GDP SA QoQ	1Q A	0.4%	0.3%	0.2%	
	16:00	EZ	GDP SA YoY	1Q A	1.2%	1.1%	1.1%	
	16:00	EZ	Unemployment Rate	Mar	7.7%	7.8%	7.8%	
	19:00	DE	CPI EU Harmonized MoM	Apr P	1.0%	0.2%	0.5%	
	19:00	DE	CPI EU Harmonized YoY	Apr P	2.1%	1.4%	1.4%	
	19:00	DE	CPI MoM	Apr P	1.0%	0.5%	0.4%	
	19:00	DE	CPI YoY	Apr P	2.0%	1.5%	1.3%	
	19:30	US	Employment Cost Index	1Q	0.7%	0.7%	0.7%	
	19:30	CA	GDP MoM	Feb	-0.1%	0.0%	0.3%	
	19:30	CA	GDP YoY	Feb	1.1%	1.4%	1.6%	
	19:30	CA	Industrial Product Price MoM	Mar	1.3%	--	0.3%	
	20:00	US	S&P CoreLogic CS 20-City MoM SA	Feb	0.2%	0.2%	0.11%	0.09%
	20:00	US	S&P CoreLogic CS 20-City NSA Index	Feb	212.70	213.08	212.41	212.27
	20:00	US	S&P CoreLogic CS 20-City YoY NSA	Feb	3.00%	2.95%	3.58%	3.51%
	20:00	US	S&P CoreLogic CS US HPI NSA Index	Feb	204.04	--	204.71	204.62
	20:00	US	S&P CoreLogic CS US HPI YoY NSA	Feb	4.01%	3.90%	4.26%	4.22%
	20:45	US	MNI Chicago PMI	Apr	52.6	58.5	58.7	
	21:00	US	Conf. Board Consumer Confidence	Apr	129.2	126.8	124.1	
	21:00	US	Conf. Board Expectations	Apr	103.0	--	99.8	
	21:00	US	Conf. Board Present Situation	Apr	168.3	--	160.6	163.0
	21:00	US	Pending Home Sales MoM	Mar	3.5%	1.5%	-1.0%	
	21:00	US	Pending Home Sales NSA YoY	Mar	-3.2%	-4.0%	-5.0%	
Wed/01-May-19	05:30	AU	AiG Perf of Mfg Index	Apr	54.8	--	51	
	05:45	NZ	Average Hourly Earnings QoQ	1Q	1.1%	0.8%	1.0%	
	05:45	NZ	Employment Change QoQ	1Q	-0.2%	0.5%	0.1%	
	05:45	NZ	Employment Change YoY	1Q	1.5%	2.2%	2.3%	
	05:45	NZ	Participation Rate	1Q	70.4%	70.9%	70.9%	
	05:45	NZ	Pvt Wages Ex Overtime QoQ	1Q	0.3%	0.5%	0.5%	
	05:45	NZ	Pvt Wages Inc Overtime QoQ	1Q	0.3%	0.5%	0.5%	
	05:45	NZ	Unemployment Rate	1Q	4.2%	4.3%	4.3%	
	All	CN	Bank Holiday (Labour Day)					
	All	CH	Bank Holiday (Labour Day)					
	All	DE	Bank Holiday (Labour Day)					
	All	JP	Bank Holiday (Coronation Day)					
	06:00	AU	CBA Australia PMI Mfg	Apr F	50.9	51	51	
	07:00	AU	CoreLogic House Px MoM	Apr	-0.5%	--	-0.7%	
	07:00	KR	Exports YoY	Apr	-2%	--	-8.2%	
	07:00	KR	Imports YoY	Apr	2.4%	--	-6.7%	
	07:00	KR	Trade Balance	Apr	\$4.12b	\$5.4b	\$5222m	\$5.21b
	07:30	JP	Nikkei Japan PMI Mfg	Apr F		--	49.5	
	13:30	AU	Commodity Index AUD	Apr	122.2	--	123	122.1
	13:30	AU	Commodity Index SDR YoY	Apr	14.4%	--	11.0%	
	15:30	EZ	ECB Vice President Guindos Speaks in London					
	15:30	GB	Markit UK PMI Manufacturing SA	Apr	53.1	53.1	55.1	
	15:30	GB	Mortgage Approvals	Mar	62.3k	65.5k	64.3k	65.3k
	15:30	GB	Net Consumer Credit	Mar	0.5b	1.0b	1.1b	1.2b
	15:30	GB	Net Lending Sec. on Dwellings	Mar	4.12b	3.5b	3.5b	
	19:15	US	ADP Employment Change	Apr	275k	180k	129k	151k
	19:30	CA	MLI Leading Indicator MoM	Mar	0.2%	--	0.0%	
	20:15	GB	BOE Court Chair Fried Speaks Before Lawmakers					
	20:30	CA	Markit Canada Manufacturing PMI	Apr	49.7	--	50.5	
	20:45	US	Markit US Manufacturing PMI	Apr F	52.6	52.4	52.4	
	21:00	US	Construction Spending MoM	Mar	-0.9%	0.1%	1.0%	
	21:00	US	ISM Employment	Apr	52.4	--	57.5	
	21:00	US	ISM Manufacturing	Apr	52.8	55	55.3	
	21:00	US	ISM New Orders	Apr	51.7	--	57.4	
	21:00	US	ISM Prices Paid	Apr	50	55.7	54.3	
	21:30	US	DOE Cushing OK Crude Inventory	Apr-26	265k	--	463k	
	21:30	US	DOE U.S. Crude Oil Inventories	Apr-26	9934k	1750k	5479k	
	21:30	US	DOE U.S. Distillate Inventory	Apr-26	-1307k	-750k	-662k	
	21:30	US	DOE U.S. Gasoline Inventories	Apr-26	917k	-950k	-2129k	
Thu/02-May-19	01:00	US	FOMC Rate Decision (Lower Bound)	May-01	2.25%	2.25%	2.25%	
	01:00	US	FOMC Rate Decision (Upper Bound)	May-01	2.50%	2.50%	2.50%	
	01:00	US	Interest Rate on Excess Reserves	May-02	2.35%	2.40%	2.40%	
	01:30	US	Fed Chair Powell Holds Press Conference After FOMC Meeting					
	All	CN	Bank Holiday (Labour Day)					
	All	JP	Bank Holiday (National Holiday)					
	06:00	KR	CPI Core YoY	Apr		--	0.9%	
	06:00	KR	CPI MoM	Apr	0.4%	0.3%	-0.2%	
	06:00	KR	CPI YoY	Apr	0.6%	0.5%	0.4%	
	07:30	KR	Nikkei South Korea PMI Mfg	Apr	50.2	48.5	48.8	

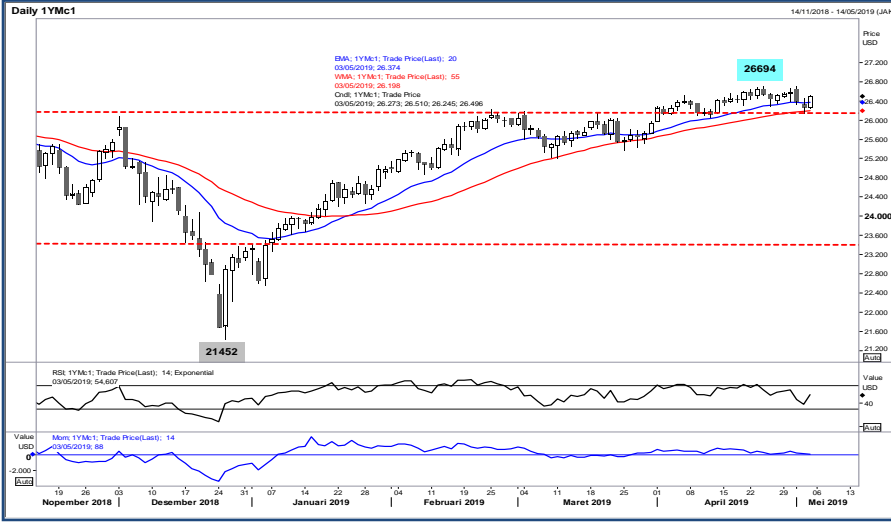
	08:45	CN	Caixin China PMI Mfg	Apr		51	50.8		
	12:00	GB	U.K. Local Elections						
	13:30	CH	Retail Sales Real YoY	Mar	-0.7%	-0.4%	-0.2%		0.0%
	14:30	CH	PMI Manufacturing	Apr	48.5	51.0	50.3		
	14:55	DE	Markit/BME Germany Manufacturing PMI	Apr F	44.4	44.5	44.5		
	15:00	EZ	Markit Eurozone Manufacturing PMI	Apr F	47.9	47.8	47.8		
	15:30	HK	GDP SA QoQ	1Q		--	-0.3%		
	15:30	HK	GDP YoY	1Q		--	1.3%		
	15:30	GB	Markit/CIPS UK Construction PMI	Apr	50.5	50.3	49.7		
	18:00	GB	Bank of England Bank Rate	May-02	0.75%	0.75%	0.75%		
	18:00	GB	Bank of England Inflation Report						
	18:00	GB	BOE Asset Purchase Target	May	435b	435b	435b		
	18:00	GB	BOE Corporate Bond Target	May	10b	10b	10b		
	18:30	GB	BOE's Carney speaks at press conference in London						
	19:30	US	Continuing Claims	Apr-20	1671k	1660k	1654k		
	19:30	US	Initial Jobless Claims	Apr-27	230k	215k	230k		
	19:30	US	Nonfarm Productivity	1Q P	3.6%	2.2%	1.9%		1.3%
	19:30	US	Unit Labor Costs	1Q P	-0.9%	1.5%	2.0%		2.5%
	21:00	US	Cap Goods Orders Nondef Ex Air	Mar F	1.4%	--	1.3%		
	21:00	US	Cap Goods Ship Nondef Ex Air	Mar F	0.0%	--	-0.2%		
	21:00	US	Durable Goods Orders	Mar F	2.6%	--	2.7%		
	21:00	US	Durables Ex Transportation	Mar F	0.3%	--	0.4%		
	21:00	US	Factory Orders	Mar	1.9%	1.6%	-0.5%		-0.3%
	21:00	US	Factory Orders Ex Trans	Mar	0.8%	--	0.3%		
Fri/03-May-19	05:30	AU	AIG Perf of Services Index	Apr	46.5	--	44.8		
	06:00	AU	CBA Australia PMI Composite	Apr F	50.0	--	50.6		
	06:00	AU	CBA Australia PMI Services	Apr F	50.1	--	50.5		
	All	JP	Bank Holiday (Constitution Memorial Day)						
	08:30	AU	Building Approvals MoM	Mar	-15.5%	-12.0%	19.1%		
	08:30	AU	Building Approvals YoY	Mar	-27.3%	-25.1%	-12.5%		-12.3%
	12:45	CH	SECO Consumer Confidence	Apr	-6	-3	-4		
	13:30	CH	CPI Core YoY	Apr	0.5%	0.5%	0.5%		
	13:30	CH	CPI EU Harmonized MoM	Apr	0.6%	--	0.3%		
	13:30	CH	CPI EU Harmonized YoY	Apr	1.1%	--	0.7%		
	13:30	CH	CPI MoM	Apr	0.2%	0.2%	0.5%		
	13:30	CH	CPI YoY	Apr	0.7%	0.7%	0.7%		
	15:30	GB	Markit/CIPS UK Composite PMI	Apr	50.9	50.6	50		
	15:30	GB	Markit/CIPS UK Services PMI	Apr	50.4	50.4	48.9		
	15:30	GB	Official Reserves Changes	Apr		--	-\$172m		
	15:30	HK	Retail Sales Value YoY	Mar		--	-10.1%		
	15:30	HK	Retail Sales Volume YoY	Mar		--	-10.4%		
	16:00	EZ	CPI Core YoY	Apr A	1.2%	1.0%	0.8%		
	16:00	EZ	CPI Estimate YoY	Apr	1.7%	1.6%	1.4%		
	16:00	EZ	PPI MoM	Mar	-0.1%	0.0%	0.1%		
	16:00	EZ	PPI YoY	Mar	2.9%	3.0%	3.0%		
	19:30	US	Advance Goods Trade Balance	Mar	-\$71.4b	-\$73.0b	-\$70.9b		
	19:30	US	Average Hourly Earnings MoM	Apr	0.2%	0.3%	0.1%		0.2%
	19:30	US	Average Hourly Earnings YoY	Apr	3.2%	3.3%	3.2%		
	19:30	US	Average Weekly Hours All Employees	Apr	34.4	34.5	34.5		
	19:30	US	Change in Manufact. Payrolls	Apr	4k	10k	-6k		0k
	19:30	US	Change in Nonfarm Payrolls	Apr	263k	190k	196k		189k
	19:30	US	Change in Private Payrolls	Apr	236k	185k	182k		179k
	19:30	US	Labor Force Participation Rate	Apr	62.8%	63.0%	63.0%		
	19:30	US	Retail Inventories MoM	Mar	-0.3%	0.1%	0.3%		
	19:30	US	Two-Month Payroll Net Revision	Apr	16k	--	14k		
	19:30	US	Underemployment Rate	Apr	7.3%	--	7.3%		
	19:30	US	Unemployment Rate	Apr	3.6%	3.8%	3.8%		
	19:30	US	Wholesale Inventories MoM	Mar P	0.0%	0.2%	0.2%		
	20:45	US	Markit US Composite PMI	Apr F	53.0	--	52.8		
	20:45	US	Markit US Services PMI	Apr F	53.0	52.9	52.9		
	21:00	US	ISM Non-Manufacturing Index	Apr	55.5	57.0	56.1		
	21:15	US	Fed's Evans Speaks at NABE International Forum in Stockholm						
	22:30	US	Fed's Clarida Speaks at Hoover Institute Policy Conference						
Sat/04-May-19	00:00	US	Baker Hughes U.S. Rig Count	May-03	990	--	991		
	00:45	US	Fed's Williams Speaks at Hoover Institute Policy Conference						
	06:45	US	Fed's Bullard, Daly, Kaplan and Mester Speak at Hoover Event						

DATE	WIB	CTY	INDICATORS	PER	ACTUAL	FORECAST	PREV.	REV.
29-Apr - 10-May	N/A	JP	Construction Orders YoY	Mar		--	-3.4%	
Mon/06-May-19	07:30	HK	Nikkei Hong Kong PMI	Apr		--	48	
	All	JP	Bank Holiday (Children's Day)					
	08:00	NZ	ANZ Commodity Price	Apr		--	1.4%	
	08:00	AU	Melbourne Institute Inflation MoM	Apr		--	0.4%	
	08:00	AU	Melbourne Institute Inflation YoY	Apr		--	2.1%	
	08:45	CN	Caixin China PMI Composite	Apr		--	52.9	
	08:45	CN	Caixin China PMI Services	Apr		54.6	54.4	
	All	GB	Bank Holiday (May Bank Holiday)					
	All	DE	Bank Holiday (Early May Bank Holiday)					
	14:55	DE	Markit Germany Services PMI	Apr F		--	55.6	
	14:55	DE	Markit/BME Germany Composite PMI	Apr F		--	52.1	
	15:00	EZ	Markit Eurozone Composite PMI	Apr F		--	51.3	
	15:00	EZ	Markit Eurozone Services PMI	Apr F		--	52.5	
	15:30	EZ	Sentix Investor Confidence	May		--	-0.3	
	16:00	EZ	Retail Sales MoM	Mar		--	0.4%	
	16:00	EZ	Retail Sales YoY	Mar		--	2.8%	
	20:30	US	Fed's Harker Speaks on the Economic Outlook					
Tue/07-May-19	00:45	CA	Speech – Stephen S. Poloz, Governor					
	04:00	KR	Foreign Reserves	Apr		--	\$405.25b	
	N/A	CN	Foreign Reserves	Apr		--	\$3098.76b	
	N/A	HK	Foreign Reserves	Apr		--	\$437.9b	
	05:30	AU	AiG Perf of Construction Index	Apr		--	45.6	
	07:30	JP	Nikkei Japan PMI Mfg	Apr F		--	49.5	
	08:30	AU	Retail Sales Ex Inflation QoQ	1Q		--	0.1%	
	08:30	AU	Retail Sales MoM	Mar		--	0.8%	
	08:30	AU	Trade Balance	Mar		--	A\$4801m	
	10:00	NZ	2Yr Inflation Expectation	2Q		--	2.02%	
	11:30	AU	RBA Cash Rate Target	May-07		--	1.5%	
	13:00	DE	Factory Orders MoM	Mar		--	-4.2%	
	13:00	DE	Factory Orders WDA YoY	Mar		--	-8.4%	
	13:30	AU	Foreign Reserves	Apr		--	A\$77.1b	
	14:00	CH	Foreign Currency Reserves	Apr		--	756.0b	
	14:30	GB	Halifax House Price 3Mths/Year	Apr		--	2.6%	
	14:30	GB	Halifax House Prices MoM	Apr		--	-1.6%	
	14:30	DE	Markit Germany Construction PMI	Apr		--	55.6	
	15:00	GB	BOE's Cunliffe speaks in London.					
	16:00	EZ	EU Commission Economic Forecasts					
	18:00	US	Fed's Kaplan Speaks in Beijing on Moderated Panel					
	21:00	CA	Ivey Purchasing Managers Index SA	Apr		--	54.3	
	23:30	GB	BOE's Haldane speaks in Sheffield.					
Wed/08-May-19	02:00	US	Consumer Credit	Mar		\$16.750b	\$15.188b	
	06:00	KR	BoP Current Account Balance	Mar		--	\$3601.9m	
	06:00	KR	BoP Goods Balance	Mar		--	\$5479.4m	
	06:50	JP	BOJ Minutes of March Policy Meeting					
	06:50	JP	Monetary Base End of period	Apr		--	¥506.3t	
	06:50	JP	Monetary Base YoY	Apr		--	3.8%	
	07:30	JP	Nikkei Japan PMI Composite	Apr		--	50.4	
	07:30	JP	Nikkei Japan PMI Services	Apr		--	52	
	09:00	NZ	RBNZ Official Cash Rate	May-08		1.75%	1.75%	
	N/A	CN	Exports YoY	Apr		--	14.2%	
	N/A	CN	Exports YoY CNY	Apr		--	21.3%	
	N/A	CN	Imports YoY	Apr		--	-7.6%	
	N/A	CN	Imports YoY CNY	Apr		--	-1.8%	
	N/A	CN	Trade Balance	Apr		--	\$32.64b	
	N/A	CN	Trade Balance CNY	Apr		--	221.23b	
	12:45	CH	Unemployment Rate	Apr		--	2.5%	
	12:45	CH	Unemployment Rate SA	Apr		--	2.4%	
	13:00	DE	Industrial Production SA MoM	Mar		--	0.7%	
	13:00	DE	Industrial Production WDA YoY	Mar		--	-0.4%	
	15:15	GB	BOE's Ramsden speaks in London.					
	21:30	US	DOE Cushing OK Crude Inventory	May-03		--	265k	
	21:30	US	DOE U.S. Crude Oil Inventories	May-03		--	9934k	
	21:30	US	DOE U.S. Distillate Inventory	May-03		--	-1307k	
	21:30	US	DOE U.S. Gasoline Inventories	May-03		--	917k	
Thu/09-May-19	06:01	GB	RICS House Price Balance	Apr		--	-24%	
	08:30	CN	CPI YoY	Apr		--	2.3%	
	08:30	CN	PPI YoY	Apr		--	0.4%	
	12:00	JP	Consumer Confidence Index	Apr		40.4	40.5	

	19:30	US	Continuing Claims	Apr-27		--	--	
	19:30	US	Initial Jobless Claims	May-04		--	--	
	19:30	US	PPI Ex Food and Energy MoM	Apr		0.2%	0.3%	
	19:30	US	PPI Ex Food and Energy YoY	Apr		2.5%	2.4%	
	19:30	US	PPI Ex Food, Energy, Trade MoM	Apr		0.2%	0.0%	
	19:30	US	PPI Ex Food, Energy, Trade YoY	Apr		--	2.0%	
	19:30	US	PPI Final Demand MoM	Apr		0.2%	0.6%	
	19:30	US	PPI Final Demand YoY	Apr		2.3%	2.2%	
	19:30	US	Trade Balance	Mar		-\$52.0b	-\$49.4b	
	21:00	US	Wholesale Inventories MoM	Mar F		--	--	
	21:00	US	Wholesale Trade Sales MoM	Mar		--	0.3%	
Fri/10-May-19	00:15	US	Fed's Evans Speaks at Community Development Conference					
	06:30	JP	Household Spending YoY	Mar		1.7%	1.7%	
	06:30	JP	Labor Cash Earnings YoY	Mar		-0.6%	-0.8%	
	06:30	JP	Real Cash Earnings YoY	Mar		-1.2%	-1.1%	
	06:50	JP	BOJ Summary of Opinions					
	08:30	AU	RBA Statement on Monetary Policy					
	N/A	CN	BoP Current Account Balance	1Q P		--	\$54.6b	
	13:00	DE	Current Account Balance	Mar		--	16.3b	
	13:00	DE	Exports SA MoM	Mar		--	-1.3%	
	13:00	DE	Imports SA MoM	Mar		--	-1.6%	
	13:00	DE	Trade Balance	Mar		--	17.9b	
	14:00	EZ	ECB's Villeroy Speaks in Paris					
	14:30	EZ	ECB's Lautenschlaeger Speaks in Paris					
	15:30	GB	Construction Output SA MoM	Mar		--	0.4%	
	15:30	GB	Construction Output SA YoY	Mar		--	3.3%	
	15:30	GB	Exports QoQ	1Q P		--	1.6%	
	15:30	GB	GDP (MoM)	Mar		--	0.2%	
	15:30	GB	GDP QoQ	1Q P		--	0.2%	
	15:30	GB	GDP YoY	1Q P		--	1.4%	
	15:30	GB	Government Spending QoQ	1Q P		--	1.3%	
	15:30	GB	Gross Fixed Capital Formation QoQ	1Q P		--	-0.6%	
	15:30	GB	Imports QoQ	1Q P		--	2.1%	
	15:30	GB	Index of Services 3M/3M	Mar		--	0.4%	
	15:30	GB	Index of Services MoM	Mar		--	0.1%	
	15:30	GB	Industrial Production MoM	Mar		--	0.6%	
	15:30	GB	Industrial Production YoY	Mar		--	0.1%	
	15:30	GB	Manufacturing Production MoM	Mar		--	0.9%	
	15:30	GB	Manufacturing Production YoY	Mar		--	0.6%	
	15:30	GB	Private Consumption QoQ	1Q P		--	0.3%	
	15:30	GB	Total Business Investment QoQ	1Q P		--	-0.9%	
	15:30	GB	Total Business Investment YoY	1Q P		--	-2.5%	
	15:30	GB	Trade Balance	Mar		--	-£4860m	
	15:30	GB	Trade Balance Non EU GBP/Mn	Mar		--	-£5841m	
	15:30	GB	Visible Trade Balance GBP/Mn	Mar		--	-£14112m	
	16:30	EZ	ECB's Visco Speaks in Paris					
	19:30	US	CPI Core Index SA	Apr		261.884	261.374	
	19:30	US	CPI Ex Food and Energy MoM	Apr		0.2%	0.1%	
	19:30	US	CPI Ex Food and Energy YoY	Apr		2.1%	2.0%	
	19:30	US	CPI Index NSA	Apr		255.732	254.202	
	19:30	US	CPI MoM	Apr		0.4%	0.4%	
	19:30	US	CPI YoY	Apr		2.0%	1.9%	
	19:30	CA	Full Time Employment Change	Apr		--	-6.4	
	19:30	CA	Hourly Wage Rate Permanent Employees YoY	Apr		--	2.3%	
	19:30	CA	Net Change in Employment	Apr		--	-7.2k	
	19:30	CA	Part Time Employment Change	Apr		--	-0.9	
	19:30	CA	Participation Rate	Apr		--	65.7	
	19:30	US	Real Avg Hourly Earning YoY	Apr		--	1.3%	
	19:30	US	Real Avg Weekly Earnings YoY	Apr		--	1.3%	
	19:30	CA	Unemployment Rate	Apr		--	5.8%	
	20:08	US	Fed's Bostic Discusses Economic Outlook					
	21:00	US	Fed's Williams Speaks to Bronx Bankers Breakfast					
	21:30	EZ	ECB's Coeure Speaks in Paris					
Sat/11-May-19	00:00	US	Baker Hughes U.S. Rig Count	May-10		--	--	
	01:00	US	Monthly Budget Statement	Apr		\$165.0b	-\$146.9b	
11-May - 18-May	N/A	CN	Foreign Direct Investment YoY CNY	Apr		--	8.0%	

Dow Jones (1YMM9 – Jun)

Exp. Date: 21 Jun 2019



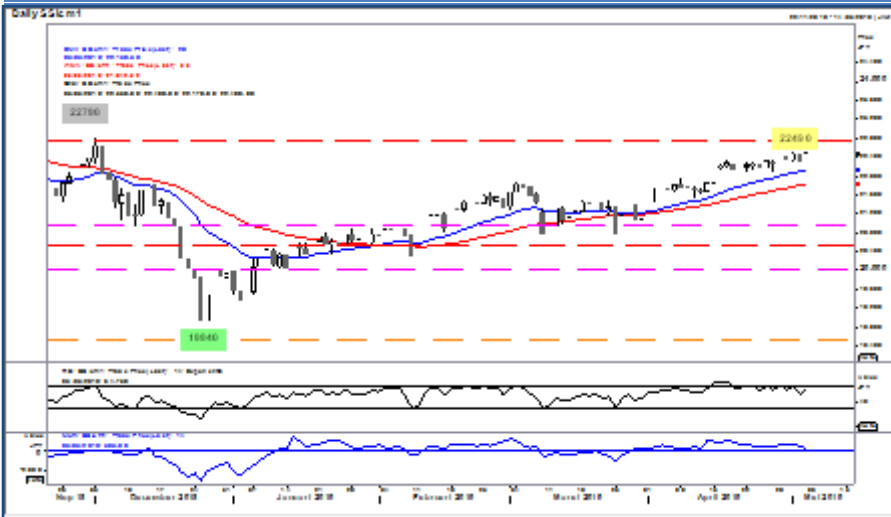
RESISTANCE	26881	
	26699	
	26608	
SUPPORT	26335	
	26153	
	26062	
SUGGESTION	BUY	26500
	SELL	---
	S/L	26400
	T/P:	26650 26750

DATE	OPEN	HIGH	LOW	RANGE	CLOSE	SETTLE	CHANGE	CHANGE %	VOLUME
03 May	26273	26518	26245	273	26517	26517	↑ 252	0.96	169171

WEEKLY		MAY		2019	
HIGH	LOW	HIGH	LOW	HIGH	LOW
26691 (01/May)	26148 (02/May)	26691 (01/May)	26148 (02/May)	26694 (24/Apr)	22563 (04/Jan)

Nikkei (SSlamM9 – Jun)

Last Trading Date: 17 Jun 2019



RESISTANCE	22875	
	22685	
	22590	
SUPPORT	22305	
	22115	
	22020	
SUGGESTION	BUY	22465
	SELL	---
	S/L	22365
	T/P:	22615 22715

DATE	OPEN	HIGH	LOW	RANGE	CLOSE	SETTLE	CHANGE	CHANGE%	VOLUME
03 May SS1pmM9	22290	22495	22290	205	22495	---	↑ 210	0.94	8389
03 May SS1amM9	22290	22330	22210	120	22285	22285	↓ 25	0.11	4204

WEEKLY		MAY		2019	
HIGH	LOW	HIGH	LOW	HIGH	LOW
22495 (03/May)	22165 (01/May)	22495 (03/May)	22165 (01/May)	22495 (03/May)	19205 (04/Jan)

Kospi 200 (KSM9 – Jun)

Exp. Date: 13 Jun 2019



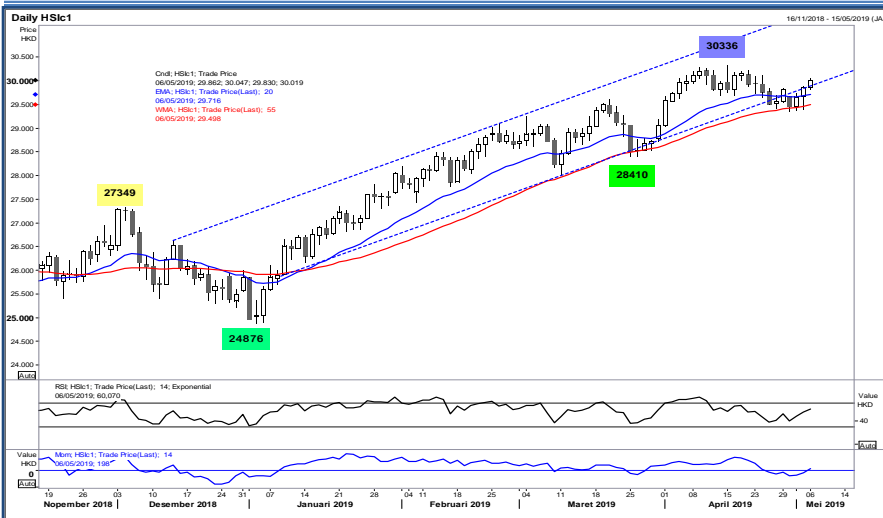
RESISTANCE	289.05	
	287.85	
	285.90	
SUPPORT	282.75	
	281.55	
	279.60	
SUGGESTION	BUY	283.65
	SELL	---
	S/L	282.40
	T/P:	285.40 286.65

DATE	OPEN	HIGH	LOW	RANGE	CLOSE	SETTLE	CHANGE	CHANGE %	VOLUME
03 May	286.60	286.65	283.50	3.15	283.95	283.95	↓ 2.90	1.01	188591

WEEKLY		MAY		2019	
HIGH	LOW	HIGH	LOW	HIGH	LOW
287.65 (29/Apr)	282.30 (29/Apr)	287.50 (02/May)	283.45 (02/May)	292.10 (17/Apr)	255.60 (04/Jan)

Hang Seng (HSIK9 – May)

Exp. Date: 30 May 2019



RESISTANCE	30875	
	30461	
	30240	
SUPPORT	29605	
	29191	
	28970	
SUGGESTION	BUY	29990
	SELL	---
	S/L	29840
	T/P:	30190 30340

DATE	OPEN	HIGH	LOW	RANGE	CLOSE	SETTLE	CHANGE	CHANGE %	VOLUME
03 May	29553	29875	29412	463	29863	29863	↑ 205	0.69	173037

WEEKLY		MAY		2019	
HIGH	LOW	HIGH	LOW	HIGH	LOW
29875 (03/May)	29368 (30/Apr)	29875 (03/May)	29391 (02/May)	30336 (15/Apr)	24876 (03/Jan)

Disclaimer

All contents of this report have been prepared by the Research Dept. of Valbury Asia Futures and are provided solely for informational purpose. We have taken reasonable measures to ensure the accuracy of the report, however, do not guarantee its accuracy and will not accept liability for any consequential loss or damage which may arise directly or indirectly from any use of the report.

Published by RESEARCH DEPARTMENT – PT VALBURY ASIA FUTURES
Menara Karya 9th Floor, Jl. HR Rasuna Said Blok X-5 Kav. 1-2 Jakarta 12950 Indonesia
Phone : +6221-25533777, Email: research@valbury.com